

BARCODING, DATABASE AND DIGITIZATION OF BSIS HERBARIUM

Submitted by:

Smt. Sushreya Pal, Botanical Assistant

Smt. Shrabasti Das, Senior Preservation Assistant

Industrial Section Indian Museum,
Botanical Survey of India,
Kolkata



March 2024

CONTENTS

Sl. No.	Topic	Page No.
1	Introduction	1-2
2	Methodology	2-3
3	Results	3
4	Conclusion	3-4
5	Acknowledgement	4
6	Annexure 1 Metadata of Digitized Herbarium Specimens at BSIS (with Barcode BSIS000013385 to BSIS000014384)	5-55
7	Photo Plates	56-59

Introduction:

Herbaria have long been recognized as valuable resources for botanical research, conservation, and education. These collections of dried and pressed plant specimens provide an invaluable record of plant biodiversity and have been used for various purposes, including taxonomic studies, ecological research, and drug discovery. However, the vast majority of these collections are housed in physical form, making them difficult to access and utilize for researchers and the general public.

The digitization of herbarium specimens has emerged as an innovative solution to this problem. By capturing high-quality digital images of herbarium specimens and creating a searchable database, researchers can easily access and study these specimens from anywhere in the world. Additionally, digitization efforts can help to preserve these valuable collections and prevent loss or damage due to physical degradation or disasters.

The Economic Herbaria at Industrial Section, Indian Museum with acronym BSIS, houses a significant collection of plant specimens with economic importance. The specimens in this collection are particularly relevant to industrial and economic applications, including pharmaceuticals, food, and agriculture. The collection is further divided into separate sections for dicot and monocot specimens, as well as a huge collection of dicot specimens, specifically collected by Sir George Watt (during the period of 1881 to 1895), J.H. Lace (during the period of 1889 to 1901), I.H. Burkill (during the period of 1904 to 1909), Dr. K.S. Srinivasan (during the period of 1948 to 1959), and few collections were made by the then Reporter on Economic Products to the Govt of India from time to time.

However, the collection is currently only accessible in physical form, limiting its use and potential impact. In this report, we present the results of our efforts to digitize the herbarium specimens present in the Economic Herbaria at Industrial

Section, Indian Museum with acronym BSIS. We describe our methods for capturing high-quality digital images of the specimens, creating a searchable database, and making the digitized specimens accessible to researchers and the general public. Our study aims to provide a valuable resource for botanical research and education, as well as contribute to the preservation of this important collection for future generations.

Methodology:

The digitization of the herbarium specimens present in the Economic Herbaria at Industrial Section, Indian Museum was conducted using an Epson Expression 12000XL scanner. For each herbarium sheet, we captured two images using different settings to ensure high-quality digitization of the specimens.

The first setting used was 24-bit colour mode, 300 dpi resolution, and jpeg image format. This setting was chosen as it provides a balance between image quality and file size, making it suitable for online access and storage. The second setting used was 48-bit colour mode, 600 dpi resolution, and tiff image format. This setting was chosen to capture the maximum amount of detail and information possible, making it suitable for scientific research and analysis.

Before scanning, each herbarium sheet was inspected for any damage or deformities that may affect the quality of the digital image. Any sheets with significant damage were excluded from the digitization process to ensure the quality of the digital image is not compromised. In addition, a standard scale and colour codes were added to each herbarium sheet during scanning to aid in the accurate measurement and analysis of the specimens.

To ensure accuracy and consistency in the digitization process, we created a standard protocol for scanning each herbarium sheet. The protocol includes guidelines for the placement of the sheet on the scanner bed, the orientation of

the sheet, and the adjustments of the scanner settings. This protocol was followed for each sheet, ensuring uniformity in the digitization process.

After scanning, the digital images were organized in folders and will be uploaded in Botanical Survey of India's Digital Herbaria database using appropriate software. The database includes information about the specimen, including its barcode number, scientific name (generic and specific epithet where mentioned), family name, collected by, place of collection, collection date, and field number. The digitized specimens will be made available online for researchers and the general public to access and study.

Results:

A total of 1000 herbarium specimens of dicot plants were successfully digitized using the scanner. Each specimen was captured in two settings, resulting in a total of 2000 digital images. The metadata for each specimen was recorded in a table along with barcode number (BSIS000013385 to BSIS000014384), scientific name (generic and specific epithet where mentioned), family name, collected by, place of collection, collection date, and field number (attached in **Annexure 1**).

The metadata recorded for each specimen provides valuable information for researchers studying economic important plants, including their taxonomic classification, geographic distribution, and collection history. The barcodes also provide a unique identifier for each specimen, making it easy to locate and retrieve specific specimens from the collection.

Conclusion:

In summary, our digitization process utilized an Epson Expression 12000XL scanner to capture high-quality digital images of herbarium specimens present in

the Economic Herbaria at Industrial Section, Indian Museum (BSIS). The use of two different settings allowed us to balance image quality and file size while also capturing maximum detail and information. A standard protocol was developed and followed for each sheet to ensure accuracy and consistency in the digitization process, and a standard scale and colour codes were added to aid in accurate measurement and analysis of the specimens.

Acknowledgement:

We would like to express our profound gratitude to Dr. Manas Bhaumik, Scientist F and Head of Office, Industrial Section Indian Museum, Botanical Survey of India for his invaluable support and guidance throughout the project. His insightful suggestions and constant encouragement were instrumental in the successful completion of this project.

We would also like to thank our recently joined Multi-tasking Staff, Mr. Sourav Dey Das for his help in the digitization process. His dedicated efforts and hard work played a crucial role in the successful completion of the project.

Lastly, we would like to express our sincere thanks to all the staff members of Industrial Section, Indian Museum, who provided us assistance whenever necessary for the project's completion. Their support and cooperation were crucial in making this project a success.

Annexure 1 (Metadata of Digitised Herbarium specimens at BSIS with Barcode)

SL. NO.	BARCODE	SCIENTIFIC NAME	FAMILY	COLLECTED BY	COLLECTED FROM	DATE	FIELD NO.	Acc. No.	DIGITIZED BY
1	BSIS000013385	Naravelia zeylanica	Ranunculaceae		Sodepur, 24 Pgs	31.10.1901		101	Sushreya Pal
2	BSIS000013386	Naravelia zeylanica	Ranunculaceae		Hazarikhil, Chittagong	11.10.1905	25978	94	Sushreya Pal
3	BSIS000013387	Naravelia zeylanica	Ranunculaceae	RK Das	Hughli, Devanandpur	1902		49663	Sushreya Pal
4	BSIS000013388	Naravelia zeylanica	Ranunculaceae		Tollygunge	23.04.1909		97	Sushreya Pal
5	BSIS000013389	Naravelia zeylanica	Ranunculaceae	Kalka Prasad	Tollygunge	23.04.1909		98	Sushreya Pal
6	BSIS000013390	Naravelia zeylanica	Ranunculaceae	Kalka Prasad	Tollygunge	23.04.1909		99	Sushreya Pal
7	BSIS000013391	Anemone vitiflora	Ranunculaceae		Konain	Sept 1890		197	Sushreya Pal
8	BSIS000013392	Anemone vitiflora	Ranunculaceae	J. H. Lace	Nogri valley, NW Himalayas	07.10.1891	1109		Sushreya Pal
9	BSIS000013393	Anemone vitiflora	Ranunculaceae	K.S. Srinivasan	Thankot, Nepal	01.11.1950		44065	Sushreya Pal
10	BSIS000013394	Aconitum ferox	Ranunculaceae	G. King	Sikkim Himalayas	05.08.1871	4483		Sushreya Pal
11	BSIS000013395	Rananculus arvensis	Ranunculaceae	J. H. Lace	Sandhara, NW Himalayas	18.02.1899	1885	219	Sushreya Pal
12	BSIS000013396	Rananculus pensylvanicus	Ranunculaceae	S.N. Mondal	Simlipal	15.04.1989		209	Sushreya Pal
13	BSIS000013397	Rananculus pensylvanicus	Ranunculaceae		Shillong	20.10.1924	56	207	Sushreya Pal
14	BSIS000013398	Rananculus laetus	Ranunculaceae	D. Hooper	Ganai	17.10.1912	38957	199	Sushreya Pal
15	BSIS000013399	Rananculus laetus	Ranunculaceae	J. H. Lace	Gothan ridge, NW Himalayas	26.04.1898	1692	201	Sushreya Pal
16	BSIS000013400	Rananculus laetus	Ranunculaceae	Chas. A. Webb.	Mandali	09.05.1893		196	Sushreya Pal
17	BSIS000013401	Rananculus laetus	Ranunculaceae	Keshava Nand	Konain, Jaunsar	Sept 1890		198	Sushreya Pal
18	BSIS000013402	Cimicifuga faetida	Ranunculaceae	Commissioner	Manur Valley, Hazara	19.08.1907	2141	535	Shrabasti Das
19	BSIS000013403	Paeonia emodi	Ranunculaceae		Garwal	29.03.1903	152	537	Shrabasti Das
20	BSIS000013404	Aconitum plamatum	Ranunculaceae	K.S. Srinivasan	Bomdila, N.E.F.A. Assam	13.05.1955		42518	Shrabasti Das
21	BSIS000013405	Aconitum plamatum	Ranunculaceae	I. H. Burkill	Top of Tonglu	19.05. 1909	30888	448	Shrabasti Das
22	BSIS000013406	Aconitum luridum	Ranunculaceae	W. Smith	Phallut, Darjeeling	10.12.1908	1825	415	Shrabasti Das
23	BSIS000013407	Aconitum luridum	Ranunculaceae	I. H. Burkill	Two miles N: of Sandakphu	01.10.1906	27696	413	Shrabasti Das

Annexure 1 (Metadata of Digitised Herbarium specimens at BSIS with Barcode)

24	BSIS000013408	<i>Aconitum luridum</i>	Ranunculaceae		Darjeeling	31.07.1900	116	411	Shrabasti Das
25	BSIS000013409	<i>Aconitum luridum</i>	Ranunculaceae		Darjeeling	31.07.1901	116	411	Shrabasti Das
26	BSIS000013410	<i>Aconitum</i> sp.	Ranunculaceae	J.H. Lace	North-Western Himalaya	20.05.1896	1380	291	Shrabasti Das
27	BSIS000013411	<i>Aconitum lycoctonum</i>	Ranunculaceae	G. Watt	Bagi Forest Simla		15224	290	Shrabasti Das
28	BSIS000013412	<i>Aconitum lycoctonum</i>	Ranunculaceae	J.H. Lace		20.05.1896	1380	292	Shrabasti Das
29	BSIS000013413	<i>Aconitum lycoctonum</i>	Ranunculaceae	E. Thuroton	Nagkauda, Simla	00.06.1891		288	Shrabasti Das
30	BSIS000013414	<i>Aconitum palmatum</i>	Ranunculaceae	I. H. Burkill	Singlila	20.10.1904	25303	445	Sabarna Dasgupta
31	BSIS000013415	<i>Aconitum palmatum</i>	Ranunculaceae	Biroo Singh	Sandakphu, Darjeeling	04.10.1903		443	Sabarna Dasgupta
32	BSIS000013416	<i>Aconitum palmatum</i>	Ranunculaceae	Biroo Singh	Sandakphu, Darjeeling	04.10.1903		444	Sabarna Dasgupta
33	BSIS000013417	<i>Aconitum palmatum</i>	Ranunculaceae	G. H. Cave	Darjeeling	14.03.1919		449	Sabarna Dasgupta
34	BSIS000013418	<i>Aconitum palmatum</i>	Ranunculaceae		Tangloo Range, Darjeeling	21.04.1900		433	Sabarna Dasgupta
35	BSIS000013419	<i>Aconitum palmatum</i>	Ranunculaceae	I. H. Burkill	Tonglu	16.10.1904	25137	441	Sabarna Dasgupta
36	BSIS000013420	<i>Aconitum palmatum</i>	Ranunculaceae	I. H. Burkill	Tonglu	02.10.1906	27736	447	Shrabasti Das
37	BSIS000013421	<i>Aconitum palmatum</i>	Ranunculaceae	G. H. Cave	Darjeeling, BENSAR	23.11.1919	603/17	446	Shrabasti Das
38	BSIS000013422	<i>Aconitum palmatum</i>	Ranunculaceae		Sandakphu, Darjeeling	13.07.1900	116	437	Shrabasti Das
39	BSIS000013423	<i>Aconitum palmatum</i>	Ranunculaceae		Tongloo, Sikkim	15.02.1899	116	440	Sushreya Pal
40	BSIS000013424	<i>Aconitum palmatum</i>	Ranunculaceae		Tongloo, Sikkim	15.02.1899	116	435	Sushreya Pal
41	BSIS000013425	<i>Aconitum palmatum</i>	Ranunculaceae		Tongloo, Sikkim	04.09.1896	116	436	Sushreya Pal
42	BSIS000013426	<i>Ranunculus laetus</i>	Ranunculaceae	I. H. Burkill	Top of Tonglu	18.05.1909	30880	208	Sushreya Pal
43	BSIS000013427	<i>Ranunculus laetus</i>	Ranunculaceae	I. H. Burkill	Bama	11.05.1906	26852	204	Sushreya Pal
44	BSIS000013428	<i>Ranunculus laetus</i>	Ranunculaceae	I. H. Burkill	Bama	11.05.1906	26852	203	Sushreya Pal

Annexure 1 (Metadata of Digitised Herbarium specimens at BSIS with Barcode)

45	BSIS000013429	Ranunculus pangiensis	Ranunculaceae		Kelar, Upper Chenab Valley, NW Himalayas	20.06.1879	196	221	Sushreya Pal
46	BSIS000013430	Ranunculus flaccidus	Ranunculaceae	I. H. Burkill	Tongloo, Sikkim	19.05.1909	30894	219	Sushreya Pal
47	BSIS000013431	Aconitum heterophylloides	Ranunculaceae	Lt. FM Bailey, Offg. British Trade Agent	Chumbi valley, Gyantse, Tibet	07.10.1908	29956	524	Sushreya Pal
48	BSIS000013432	Aconitum heterophylloides	Ranunculaceae	Lt. FM Bailey, Offg. British Trade Agent	Chumbi valley, Gyantse, Tibet	07.10.1908	29956	523	Sushreya Pal
49	BSIS000013433	Aconitum heterophylloides	Ranunculaceae	Lt. FM Bailey, Offg. British Trade Agent	Chumbi valley, Gyantse, Tibet	07.10.1908	29956	522	Sushreya Pal
50	BSIS000013434	Aconitum napellus	Ranunculaceae		Hazara, Punjab	25.02.1899	10239-2	295	Sushreya Pal
51	BSIS000013435	Aconitum ferox	Ranunculaceae		Sandakphu, Darjeeling	09.10.1896	8480	489	Sushreya Pal
52	BSIS000013436	Aconitum moschatum	Ranunculaceae		Kulu dist, Punjab	17.11.1904	23822	416	Sushreya Pal
53	BSIS000013437	Aconitum ferox	Ranunculaceae		Jani Kanda, Bushahr	07.02.1901	13999	458	Sushreya Pal
54	BSIS000013438	Aconitum ferox	Ranunculaceae		Almora, NWP	05.10.1898	8322	460	Sushreya Pal
55	BSIS000013439	Aconitum ferox	Ranunculaceae		Almora, NWP	05.10.1898	8322	461	Sushreya Pal
56	BSIS000013440	Aconitum deinorrhizum	Ranunculaceae		Nachra Konda, Bushahr, Punjab	18.10.1898	13999	455	Sushreya Pal
57	BSIS000013441	Aquilegia pubiflora	Ranunculaceae	Chas. A. Webb.	Wesban?	28.05.1893		287	Sushreya Pal
58	BSIS000013442	Aquilegia pubiflora	Ranunculaceae	J. H. Lace		22.06.1897	1593	286	Sushreya Pal
59	BSIS000013443	Nigella sativa	Ranunculaceae	Reporter on Economic Products to the Govt of India	Kulu dist, Punjab	1894		251	Sushreya Pal
60	BSIS000013444	Nigella sativa	Ranunculaceae	Reporter on Economic Products to the Govt of India	Ghatuag, Khulna	12.03.1906	26724	248	Sushreya Pal
61	BSIS000013445	Nigella sativa	Ranunculaceae		Saharanpur, NW Province	18.05.1903		249	Sushreya Pal
62	BSIS000013446	Naravelia zeylanica	Ranunculaceae	S. N. Bal	?	30.11.1925		91	Sushreya Pal
63	BSIS000013447	Anemone rivularis	Ranunculaceae	S. N. Bal	Upper Shillong hills	23.10.1924		102	Sushreya Pal
64	BSIS000013448	Anemone rivularis	Ranunculaceae	J. H. Lace	Saoltit Pass, 11000ft	14.06.1899	1580	135	Sushreya Pal

Annexure 1 (Metadata of Digitised Herbarium specimens at BSIS with Barcode)

65	BSIS000013449	<i>Anemone rivularis</i>	Ranunculaceae	J. H. Lace	Hul valley, 9500 ft	29.06.1899	1976	130	Sushreya Pal
66	BSIS000013450	<i>Anemone fetrasopila</i>	Ranunculaceae	J. H. Lace	Above Suigre forest, 8000-11000 ft	June 1899	2093	137	Sushreya Pal
67	BSIS000013451	<i>Thalictrum paveiflorum</i>	Ranunculaceae	J. H. Lace	? North-Western Himalaya	05.09.1897	1663		Shrabasti Das
68	BSIS000013452	<i>Thalictrum pedunculatum</i>	Ranunculaceae	J. H. Lace	Bashahr	21.08.1891	986	150	Shrabasti Das
69	BSIS000013453	<i>Thalictrum foliolosum</i>	Ranunculaceae	D.W. Rae	Lawtan	19.07.1909	640		Shrabasti Das
70	BSIS000013454	<i>Thalictrum foliolosum</i>	Ranunculaceae	P.H. Clutterbuck	Nainital	23.10.1907	27705	168	Shrabasti Das
71	BSIS000013455	<i>Thalictrum foliolosum</i>	Ranunculaceae	D.W. Rae	Lawtan	19.07.1909	640	165	Shrabasti Das
72	BSIS000013456	<i>Thalictrum foliolosum</i>	Ranunculaceae	D.W. Rae	Lawtan	19.07.1909	640	163	Shrabasti Das
73	BSIS000013457	<i>Thalictrum javanicum</i>	Ranunculaceae	J.H. Lace	Kalatop Forest	00.07.1895	764	159	Shrabasti Das
74	BSIS000013458	<i>Thalictrum saniculaeforme</i>	Ranunculaceae	J.H. Lace	Chamba state	14.08.1897	1780	153	Shrabasti Das
75	BSIS000013459	<i>Thalictrum javanicum</i>	Ranunculaceae	K.S. Srinivasan	Nepal (On the way from Thankot to Chitlog)	02.10.1950		44071	Shrabasti Das
76	BSIS000013460	<i>Thalictrum javanicum</i>	Ranunculaceae	K.S. Srinivasan	Nepal (On the way from Thankot to Chitlog)	02.10.1950		44070	Shrabasti Das
77	BSIS000013461	<i>Clematis grata</i>	Ranunculaceae		Kulu dist, Punjab	26.02.1907	181	33	Shrabasti Das
78	BSIS000013462	<i>Clematis grata</i>	Ranunculaceae	G.S. Harh	Kangra, Punjab	17.11.1903	244	36	Shrabasti Das
79	BSIS000013463	<i>Clematis montana</i>	Ranunculaceae	P.R. Meuta	Broach, Bombay	00.09.1894		30	Shrabasti Das
80	BSIS000013464	<i>Clematis triloba</i>	Ranunculaceae	I. H. Burkill	Namala	18.09.1909	33130	27	Shrabasti Das
81	BSIS000013465	<i>Clematis smilacifolia</i>	Ranunculaceae	I. H. Burkill	Kyankse		22158	25	Shrabasti Das
82	BSIS000013466	<i>Clematis smilacifolia</i>	Ranunculaceae	I. H. Burkill			24180	26	Shrabasti Das
83	BSIS000013467	<i>Clematis smilacifolia</i>	Ranunculaceae	I. H. Burkill	Dharwar	23.11.1902	17636	41	Shrabasti Das
84	BSIS000013468	<i>Clematis smilacifolia</i>	Ranunculaceae	I. H. Burkill	Kyankse		22158	23	Shrabasti Das

Annexure 1 (Metadata of Digitised Herbarium specimens at BSIS with Barcode)

85	BSIS000013469	<i>Clematis smilacifolia</i>	Ranunculaceae		Sagaing	21.07.1911			Shrabasti Das
86	BSIS000013470	<i>Clematis smilacifolia</i>	Ranunculaceae	A.M Sanger	Sagaing (Kwa-nyo)			21	Shrabasti Das
87	BSIS000013471	<i>Clematis smilacifolia</i>	Ranunculaceae	I. H. Burkill		26.01.1904	22636	22	Shrabasti Das
88	BSIS000013472	<i>Clematis buchananiana</i>	Ranunculaceae	J.H. Lace	Chamba state	02.11.1895	1293	83	Shrabasti Das
89	BSIS000013473	<i>Clematis buchananiana</i>	Ranunculaceae		Jaowai, Assam	09.05. 1999	22	75	Shrabasti Das
90	BSIS000013474	<i>Clematis buchananiana</i>	Ranunculaceae		Tonglu ridge	17.10.1904	25152	77	Shrabasti Das
91	BSIS000013475	<i>Trollius acaulis</i>	Ranunculaceae	J.H. Lace	?	26.06.1891	955	228	Shrabasti Das
92	BSIS000013476	<i>Trollius acaulis</i>	Ranunculaceae	J.H. Lace		14.06.1897	1577	229	Shrabasti Das
93	BSIS000013477	<i>Caltha palustris</i>	Ranunculaceae	Dr. King				226	Shrabasti Das
94	BSIS000013478	<i>Adonis aestivalis</i>	Ranunculaceae	J.H. Lace	upper India, Punjab	23.05.1897	1552	172	Shrabasti Das
95	BSIS000013479	<i>Delphinium</i>	Ranunculaceae	G.H. Cave		23.11.1919	37035	265	Shrabasti Das
96	BSIS000013480	<i>Delphinium denudatum</i>	Ranunculaceae	J.H. Lace		01.06.1895	734	260	Shrabasti Das
97	BSIS000013481	<i>Delphinium denudatum</i>	Ranunculaceae	J.H. Lace		10.04.1897	1924		Shrabasti Das
98	BSIS000013482	<i>Actonitum spicatum</i>	Ranunculaceae	Dr. King		00.09.1888		476	Shrabasti Das
99	BSIS000013483	<i>Clematis buchananiana</i>	Ranunculaceae	K.C. Malick	Kangpokpi, Manipur	16.12.1873	1372	47620	Shrabasti Das
100	BSIS000013484	<i>Clematis buchananiana</i>	Ranunculaceae	K.C. Malick	Kangpokpi, Manipur	16.12.1873	1372	47618	Shrabasti Das
101	BSIS000013485	<i>Clematis buchananiana</i>	Ranunculaceae	K.C. Malick	Kangpokpi, Manipur	16.12.1873		47619	Shrabasti Das
102	BSIS000013486	<i>Clematis buchananiana</i>	Ranunculaceae	K.S. Srinivasan	Bomdila, N.E.F.A. Assam	18.05.1955		42519	Shrabasti Das
103	BSIS000013487	<i>Clematis buchananiana</i>	Ranunculaceae	K.S. Srinivasan	Bomdila, N.E.F.A. Assam	13.05.1955		42833	Shrabasti Das
104	BSIS000013488	<i>Clematis buchananiana</i>	Ranunculaceae	K.S. Srinivasan	Bomdila, N.E.F.A. Assam	13.05.1955		42832	Sushreya Pal

Annexure 1 (Metadata of Digitised Herbarium specimens at BSIS with Barcode)

105	BSIS000013489	Clematis buchananiana	Ranunculaceae	K.S. Srinivasan	Nepal (On the way from Chitlog to Sisagari)	03.11.1950		44066	Sushreya Pal
106	BSIS000013490	Clematis buchananiana	Ranunculaceae	K.S. Srinivasan	Nepal (On the way from Chitlog to Sisagari)	03.11.1950		44067	Sushreya Pal
107	BSIS000013491	Clematis buchananiana	Ranunculaceae	K.S. Srinivasan	Nepal (On the way from Thankot to Chitlog)	02.11.1950		44069	Sushreya Pal
108	BSIS000013492	Clematis buchananiana	Ranunculaceae	K.S. Srinivasan	Nepal (On the way from Thankot to Chitlog)	02.11.1950		44068	Sushreya Pal
109	BSIS000013493	Clematis buchananiana	Ranunculaceae	K.C. Malick	Kangpokpi, Manipur	16.12.19973	1372	47621	Sushreya Pal
110	BSIS000013494	Clematis buchananiana	Ranunculaceae	D. Hooper	Lohba	18.10.1912	38977	85	Sushreya Pal
111	BSIS000013495	Clematis buchananiana	Ranunculaceae	K.C. Malick	Celjang, Manipur	17.12.1973	1431	47766	Sushreya Pal
112	BSIS000013496	Clematis buchananiana	Ranunculaceae		Shillong peak	07.11.1925	699	80	Sushreya Pal
113	BSIS000013497	Clematis grata	Ranunculaceae		Bushahr	23.06.1904		31	Sushreya Pal
114	BSIS000013498	Clematis grata	Ranunculaceae	J. H. Lace	Chamba state	24.08.1899	2055	35	Sushreya Pal
115	BSIS000013499	Clematis grata	Ranunculaceae	J. H. Lace	Kilar bridge, Chamba state, 6500 ft	24.08.1899	2055	34	Sushreya Pal
116	BSIS000013500	Clematis gouriana	Ranunculaceae	K.S. Srinivasan	Manna state forest, Mysore	27.05.1952		43950	Sushreya Pal
117	BSIS000013501	Clematis gouriana	Ranunculaceae	K.S. Srinivasan	Manna state forest, Mysore	27.05.1952		43951	Sushreya Pal
118	BSIS000013502	Clematis gouriana	Ranunculaceae	K.S. Srinivasan	Manna state forest, Mysore	27.05.1952		43952	Sushreya Pal
119	BSIS000013503	Clematis gouriana	Ranunculaceae		Lachiwala, Dehradun div.	13.11.1893		48	Sushreya Pal

Annexure 1 (Metadata of Digitised Herbarium specimens at BSIS with Barcode)

120	BSIS000013504	<i>Clematis buchananiana</i>	Ranunculaceae	S. K. Mandal	Durbin block forest, Ghoom-Bhanjang	29.10.1978	3469	50297	Sushreya Pal
121	BSIS000013505	<i>Clematis buchananiana</i>	Ranunculaceae	S. K. Mandal	Durbin block forest, Ghoom-Bhanjang	29.10.1978	3469	50296	Sushreya Pal
122	BSIS000013506	<i>Clematis buchananiana</i>	Ranunculaceae	S. K. Mandal	Reshep forest, Mungpoo	24.10.1978	3355	50295	Sushreya Pal
123	BSIS000013507	<i>Clematis connata</i>	Ranunculaceae	J.H. Lace	Pangi, 8000ft, Chamba state			71	Sushreya Pal
124	BSIS000013508	<i>Clematis buchananiana</i>	Ranunculaceae	K.S. Srinivasan	Bomdila, N.E.F.A. Assam	13.05.1955		42520	Sushreya Pal
125	BSIS000013509	<i>Clematis buchananiana</i>	Ranunculaceae	S.N.Das	Aap Cumpar Forest, Kurseong	09.10.1976	522	48776	Shrabasti Das
126	BSIS000013510	<i>Clematis montana</i>	Ranunculaceae	H.G. Carter	Simla	00.05.1917	587	10	Shrabasti Das
127	BSIS000013511	<i>Clematis montana</i>	Ranunculaceae	H.G. Carter	Simla	00.05.1917	587	9	Shrabasti Das
128	BSIS000013512	<i>Clematis gouriana</i>	Ranunculaceae	G.S. Gamble				50	Shrabasti Das
129	BSIS000013513	<i>Clematis gouriana</i>	Ranunculaceae	K.S. Srinivasan	Dehradun	00.05.1948		46056	Shrabasti Das
130	BSIS000013514	<i>Clematis gouriana</i>	Ranunculaceae	K.C. Malick	Celjang, Manipur	17.12.1973	1410	47724	Shrabasti Das
131	BSIS000013515	<i>Clematis gouriana</i>	Ranunculaceae	K.C. Malick	Celjang, Manipur	17.12.1973	1410	47723	Shrabasti Das
132	BSIS000013516	<i>Clematis montana</i>	Ranunculaceae	Chas. A. Webb.	Kunain	04.05.1893		6	Shrabasti Das
133	BSIS000013517	<i>Delphinium chinensis</i>	Ranunculaceae	Amalendu Basu	Ballygunge Sc. College	1937			Sushreya Pal
134	BSIS000013518	<i>Delphinium vestitum</i>	Ranunculaceae	L.H. Fermor	Between Phurkia DakBunglow & Pindari glacier	01.10.1906		274	Sushreya Pal
135	BSIS000013519	<i>Delphinium vestitum</i>	Ranunculaceae		Narkonda, Punjab	01.10.1892		275	Sushreya Pal
136	BSIS000013520	<i>Delphinium vestitum</i>	Ranunculaceae	J.H. Lace	Sach Pass, 10000-12000ft	06.09.1895	1222	271	Sushreya Pal
137	BSIS000013521	<i>Delphinium vestitum</i>	Ranunculaceae		Inanur valley, Hazara	19.08.1907		269	Sushreya Pal
138	BSIS000013522	<i>Delphinium vestitum</i>	Ranunculaceae		Inanur valley, Hazara	19.08.1907		270	Sushreya Pal
139	BSIS000013523	<i>Delphinium dasyanthum</i>	Ranunculaceae		Gilgit, Kashmir	06.06.1901	116	284	Sushreya Pal

Annexure 1 (Metadata of Digitised Herbarium specimens at BSIS with Barcode)

140	BSIS000013524	<i>Delphinium dasyanthum</i>	Ranunculaceae		Gilgit, Kashmir	19.08.1906		283	Sushreya Pal
141	BSIS000013525	<i>Delphinium dasyanthum</i>	Ranunculaceae		Gilgit, Kashmir	19.08.1906		282	Sushreya Pal
142	BSIS000013526	<i>Delphinium dasyanthum</i>	Ranunculaceae		Gilgit, Kashmir	06.07.1901		285	Sushreya Pal
143	BSIS000013527	<i>Delphinium saniculofolium</i>	Ranunculaceae		ziarah, Baluchistan			264	Sushreya Pal
144	BSIS000013528	<i>Delphinium denudatum</i>	Ranunculaceae		Simla, Punjab	15.09.1894		255	Sushreya Pal
145	BSIS000013529	<i>Delphinium denudatum</i>	Ranunculaceae		Simla, Punjab	18.06.1893		256	Sushreya Pal
146	BSIS000013530	<i>Delphinium denudatum</i>	Ranunculaceae		Simla to Gaucki hathi	09.05.1906	26831	261	Sushreya Pal
147	BSIS000013531	<i>Aconitum ferox</i> var <i>spicata</i>	Ranunculaceae		Sandakhphu, Darjeeling	13.07.1900	116	483	Shrabasti Das
148	BSIS000013532	<i>Aconitum ferox</i> var <i>spicata</i>	Ranunculaceae		Sandakhphu, Darjeeling	13.07.1900	116	482	Shrabasti Das
149	BSIS000013533	<i>Aconitum spicatum</i>	Ranunculaceae		Sandakhphu, Darjeeling	04.10.1903	116	479	Shrabasti Das
150	BSIS000013534	<i>Aconitum spicatum</i>	Ranunculaceae		Sandakhphu, Darjeeling	23.10.1904	25394	478	Shrabasti Das
151	BSIS000013535	<i>Aconitum ferox</i> var <i>laciniata</i>	Ranunculaceae		Sandakhphu, Darjeeling	13.07.1900	116	490	Shrabasti Das
152	BSIS000013536	<i>Aconitum ferox</i> var <i>laciniata</i>	Ranunculaceae		Sandakhphu, Darjeeling	13.07.1900	116	502	Shrabasti Das
153	BSIS000013537	<i>Clematis orientalis</i>	Ranunculaceae						Shrabasti Das
154	BSIS000013538	<i>Clematis asplenifolia</i>	Ranunculaceae	J. H. Lace	Beluchistan			73	Shrabasti Das
155	BSIS000013539	<i>Clematis gouriana</i>	Ranunculaceae	I. H. Burkill	Dharwar, Bombay	23.11.1900	17636	42	Shrabasti Das
156	BSIS000013540	<i>Clematis nutaus</i>	Ranunculaceae	J.H. Lace	Chamba, Punjab		708	63	Shrabasti Das
157	BSIS000013541	<i>Clematis acuminata</i>	Ranunculaceae	G. Watt	Sebata	12.11.1890	10206		Shrabasti Das
158	BSIS000013542	<i>Clematis connata</i>	Ranunculaceae		Jeolikote, Kumaun	00.10.1910	33258	66	Shrabasti Das
159	BSIS000013543	<i>Clematis connata</i>	Ranunculaceae		Jeolikote, Kumaun	00.10.1910	33258	65	Shrabasti Das

Annexure 1 (Metadata of Digitised Herbarium specimens at BSIS with Barcode)

160	BSIS000013544	<i>Clematis gouriana</i>	Ranunculaceae	I. H. Burkill	Bombay	16.11.1902	16991	39	Shrabasti Das
161	BSIS000013545	<i>Clematis montana</i>	Ranunculaceae	G.S. Harb.	Kangra, Punjab	07.11.1903	83	14	Shrabasti Das
162	BSIS000013546	<i>Clematis montana</i>	Ranunculaceae	G. Watt	Japoo, Naga Hill	00.05.1895	11443	7	Shrabasti Das
163	BSIS000013547	<i>Clematis montana</i>	Ranunculaceae		Ghajie, Simla	25.06.1903	19048	16	Shrabasti Das
164	BSIS000013548	<i>Clematis orientalis</i>	Ranunculaceae		Chamba, Punjab		530	58	Shrabasti Das
165	BSIS000013549	<i>Clematis cadmia</i>	Ranunculaceae	I. H. Burkill			22632		Shrabasti Das
166	BSIS000013550	<i>Clematis cadmia</i>	Ranunculaceae	I. H. Burkill			22632	2	Shrabasti Das
167	BSIS000013551	<i>Clematis cadmia</i>	Ranunculaceae	I. H. Burkill			22632	3	Shrabasti Das
168	BSIS000013552	<i>Aconitum ferox</i>	Ranunculaceae		Banikanda, Bushahi, Panjab	18.10.1898	13999	452	Shrabasti Das
169	BSIS000013553	<i>Ranunculus diffusus</i>	Ranunculaceae	S.K. Mandal	Fulbari	26.10.1978	3398	49940	Shrabasti Das
170	BSIS000013554	<i>Ranunculus diffusus</i>	Ranunculaceae	S.K. Mandal	Fulbari	26.10.1978	3398	49941	Shrabasti Das
171	BSIS000013555	<i>Ranunculus diffusus</i>	Ranunculaceae	I. H. Burkill	Betussu Tonglu & Kalipokri	17.10.1904	25164	189	Shrabasti Das
172	BSIS000013556	<i>Ranunculus diffusus</i>	Ranunculaceae		Mussourie	00.09.1900		190	Shrabasti Das
173	BSIS000013557	<i>Ranunculus scrleratus</i>	Ranunculaceae	I. H. Burkill	Asni	09.04.1907	27831	186	Shrabasti Das
174	BSIS000013558	<i>Ranunculus scrleratus</i>	Ranunculaceae			11.02.1904	23756	185	Shrabasti Das
175	BSIS000013559	<i>Ranunculus scrleratus</i>	Ranunculaceae	Dr. King	Kamikha	00.03.1893		183	Shrabasti Das
176	BSIS000013560	<i>Ranunculus scrleratus</i>	Ranunculaceae	H.G. Carter	Dibrugarh		67	182	Shrabasti Das
177	BSIS000013561	<i>Ranunculus scrleratus</i>	Ranunculaceae	N. Annandale	Thamonkhong	09.03.1920	1435	180	Shrabasti Das
178	BSIS000013562	<i>Ranunculus scrleratus</i>	Ranunculaceae	N. Annandale	Thamonkhong	09.03.1920	1435	181	Shrabasti Das
179	BSIS000013563	<i>Ranunculus diffusus</i>	Ranunculaceae	K.S. Srinivasan	Bomdila, N.E.F.A. Assam	12.05.1955		42830	Shrabasti Das
180	BSIS000013564	<i>Ranunculus diffusus</i>	Ranunculaceae	K.S. Srinivasan	Bomdila, N.E.F.A. Assam	12.05.1955		42831	Shrabasti Das

Annexure 1 (Metadata of Digitised Herbarium specimens at BSIS with Barcode)

181	BSIS000013565	Ranunculus diffusus	Ranunculaceae	K.S. Srinivasan	Bomdila, N.E.F.A. Assam	12.05.1955		42521	Shrabasti Das
182	BSIS000013566	Ranunculus diffusus	Ranunculaceae		N.E.F.A. Assam	07.05.1955		43390	Shrabasti Das
183	BSIS000013567	Ranunculus diffusus	Ranunculaceae	K.S. Srinivasan	Bomdila, N.E.F.A. Assam	12.05.1955		42829	Shrabasti Das
184	BSIS000013568	Ranunculus diffusus	Ranunculaceae	K.S. Srinivasan	Bomdila, N.E.F.A. Assam	12.05.1955		42827	Shrabasti Das
185	BSIS000013569	Ranunculus diffusus	Ranunculaceae	K.S. Srinivasan	Bomdila, N.E.F.A. Assam	12.05.1955		42828	Shrabasti Das
186	BSIS000013570	Ranunculus diffusus	Ranunculaceae	K.S. Srinivasan	Bomdila, N.E.F.A. Assam	12.05.1955		42825	Shrabasti Das
187	BSIS000013571	Ranunculus diffusus	Ranunculaceae	K.S. Srinivasan	Bomdila, N.E.F.A. Assam	12.05.1955		42826	Shrabasti Das
188	BSIS000013572	Ranunculus hirtellus	Ranunculaceae	G. Watt	Muttyava, Simla	00.06.1891	13531	177	Shrabasti Das
189	BSIS000013573	Ranunculus hirtellus	Ranunculaceae	I. H. Burkill		30.04.1907	28672	179	Shrabasti Das
190	BSIS000013574	Ranunculus hirtellus	Ranunculaceae	J.H. Lace	North-Western Himalaya	14.08.1897	1630	178	Shrabasti Das
191	BSIS000013575	Ranunculus falcatus	Ranunculaceae	J.H. Lace	Quetta, Beluchistan	24.02.1889	3524	173	Shrabasti Das
192	BSIS000013576	Ranunculus diffusus	Ranunculaceae	Kalka Prasad	Jatogh, Simla	18.07.1911	35547	191	Shrabasti Das
193	BSIS000013577	Ranunculus diffusus	Ranunculaceae		Phagu, Simla	00.05.1917	570	193	Shrabasti Das
194	BSIS000013578	Ranunculus diffusus	Ranunculaceae	H.G. Carter	Phagu, Simla	00.05.1917	570	192	Shrabasti Das
195	BSIS000013579	Aconitum chasmanthum	Ranunculaceae		Mix-malik nallah, Gilgit	24.09.1907	224	420	Shrabasti Das
196	BSIS000013580	Aconitum chasmanthum	Ranunculaceae		Mix-malik nallah, Gilgit	24.09.1907	224	421	Shrabasti Das
197	BSIS000013581	Aconitum ferox	Ranunculaceae		Sandakphu, Sikkim	19.10.1996	116	498	Shrabasti Das
198	BSIS000013582	Aconitum	Ranunculaceae		Kargah Nallah, Gilgit	24.09.1907	224	297	Shrabasti Das
199	BSIS000013583	Aconitum laciniatum	Ranunculaceae	K.S. Srinivasan	Nepal-Sisagari	04.11.1950		44608	Shrabasti Das
200	BSIS000013584	Aconitum laciniatum	Ranunculaceae	K.S. Srinivasan	Nepal-Sisagari	04.11.1950		44606	Shrabasti Das
201	BSIS000013585	Aconitum laciniatum	Ranunculaceae	K.S. Srinivasan	Nepal-Sisagari	04.11.1950		44607	Shrabasti Das
202	BSIS000013586	Aconitum laciniatum	Ranunculaceae	K.S. Srinivasan	Nepal-Sisagari	04.11.1950		44605	Shrabasti Das
203	BSIS000013587	Aconitum laciniatum	Ranunculaceae	K.S. Srinivasan	Nepal-Sisagari	04.11.1950		44606	Shrabasti Das

Annexure 1 (Metadata of Digitised Herbarium specimens at BSIS with Barcode)

204	BSIS000013588	<i>Aconitum laciniatum</i>	Ranunculaceae	K.S. Srinivasan	Nepal-Sisagari	04.11.1950		44603	Shrabasti Das
205	BSIS000013589	<i>Aconitum laciniatum</i>	Ranunculaceae	K.S. Srinivasan	Nepal-Sisagari	04.11.1950		44602	Shrabasti Das
206	BSIS000013590	<i>Aconitum laciniatum</i>	Ranunculaceae	K.S. Srinivasan	Nepal-Sisagari	04.11.1950		44601	Shrabasti Das
207	BSIS000013591	<i>Aconitum laciniatum</i>	Ranunculaceae	K.S. Srinivasan	Nepal-Sisagari	04.11.1950		44609	Shrabasti Das
208	BSIS000013592	<i>Aconitum laciniatum</i>	Ranunculaceae	K.S. Srinivasan	Nepal-Sisagari	04.11.1950		44610	Shrabasti Das
209	BSIS000013593	<i>Aconitum laciniatum</i>	Ranunculaceae	K.S. Srinivasan	Nepal-Sisagari	04.11.1950		44611	Shrabasti Das
210	BSIS000013594	<i>Aconitum laciniatum</i>	Ranunculaceae	K.S. Srinivasan	Nepal-Sisagari	04.11.1950		44612	Shrabasti Das
211	BSIS000013595	<i>Aconitum laciniatum</i>	Ranunculaceae	K.S. Srinivasan	Nepal-Sisagari	04.11.1950		44613	Sushreya Pal
212	BSIS000013596	<i>Aconitum laciniatum</i>	Ranunculaceae	K.S. Srinivasan	Nepal-Sisagari	04.11.1950		44614	Sushreya Pal
213	BSIS000013597	<i>Aconitum laciniatum</i>	Ranunculaceae	K.S. Srinivasan	Nepal-Sisagari	04.11.1950		44615	Sushreya Pal
214	BSIS000013598	<i>Aconitum laciniatum</i>	Ranunculaceae	K.S. Srinivasan	Nepal-Sisagari	04.11.1950		44616	Sushreya Pal
215	BSIS000013599	<i>Aconitum laciniatum</i>	Ranunculaceae	K.S. Srinivasan	Nepal-Sisagari	04.11.1950		44617	Sushreya Pal
216	BSIS000013600	<i>Aconitum laciniatum</i>	Ranunculaceae	K.S. Srinivasan	Nepal-Sisagari	04.11.1950		44597	Sushreya Pal
217	BSIS000013601	<i>Aconitum laciniatum</i>	Ranunculaceae	K.S. Srinivasan	Nepal-Sisagari	04.11.1950		44598	Sushreya Pal
218	BSIS000013602	<i>Aconitum laciniatum</i>	Ranunculaceae	K.S. Srinivasan	Nepal-Sisagari	04.11.1950		44600	Sushreya Pal
219	BSIS000013603	<i>Aconitum ferox</i>	Ranunculaceae	Reporter on Economic Products to the Govt. of India	Nachra Konda, Bushahr, Punjab	18.10.1898		495	Sushreya Pal
220	BSIS000013604	<i>Aconitum ferox</i>	Ranunculaceae	Reporter on Economic Products to the Govt. of India	Jani Kanda, Bushahr	18.10.1898		496	Sushreya Pal
221	BSIS000013605	<i>Aconitum hookeri</i>	Ranunculaceae	I. H. Burkill	Jangri, Sikkim	Oct-04	25351	422	Sushreya Pal
222	BSIS000013606	<i>Aconitum heterophyllum</i>	Ranunculaceae	Reporter on Economic Products to the Govt. of India	Mir-malik nallah, Gilgit	24.09.1907		429	Sushreya Pal
223	BSIS000013607	<i>Aconitum heterophyllum</i>	Ranunculaceae	J.H. Lace	Kalatop Forest	16.08.1895	786	430	Sushreya Pal
224	BSIS000013608	<i>Aconitum napellus</i>	Ranunculaceae	J.H. Lace	Pangi, 8000ft, Chamba state	1900		426	Sushreya Pal

Annexure 1 (Metadata of Digitised Herbarium specimens at BSIS with Barcode)

225	BSIS000013609	<i>Aconitum ferox</i>	Ranunculaceae	Reporter on Economic Products to the Govt. of India	Bushahr	17.10.1896		450	Sushreya Pal
226	BSIS000013610	<i>Aconitum napellus</i>	Ranunculaceae	George Watt?	Nepal			409	Sushreya Pal
227	BSIS000013611	<i>Aconitum napellus</i>	Ranunculaceae	J.H. Lace	Pangi, 8000ft, Chamba state	1900		400	Sushreya Pal
228	BSIS000013612	<i>Aconitum napellus</i>	Ranunculaceae	Reporter on Economic Products to the Govt. of India	Salmundi to Sach Pass, Chamba	07.09.1895	1240	401	Sushreya Pal
229	BSIS000013613	<i>Aconitum violaceum</i>	Ranunculaceae	Reporter on Economic Products to the Govt. of India	Sharan glacier valley	16.10.1894	10282	403	Sushreya Pal
230	BSIS000013614	<i>Aconitum violaceum</i>	Ranunculaceae	Reporter on Economic Products to the Govt. of India	Sharan glacier valley	15.10.1894	10282	404	Sushreya Pal
231	BSIS000013615	<i>Aconitum violaceum</i>	Ranunculaceae	Reporter on Economic Products to the Govt. of India	Sharan glacier valley	16.10.1894	13493	406	Sushreya Pal
232	BSIS000013616	<i>Aconitum napellus</i>	Ranunculaceae	Reporter on Economic Products to the Govt. of India	Punjab, Hazara dist	29.08.1900		296	Sushreya Pal
233	BSIS000013617	<i>Aconitum deinorrhizum</i>	Ranunculaceae	Reporter on Economic Products to the Govt. of India	Punjab, Chamba dist	04.10.1906		451	Sushreya Pal
234	BSIS000013618	<i>Aconitum ferox</i>	Ranunculaceae	Reporter on Economic Products	Garhwal NWP	17.03.1898		472	Sushreya Pal

Annexure 1 (Metadata of Digitised Herbarium specimens at BSIS with Barcode)

				to the Govt. of India					
235	BSIS000013619	<i>Aconitum ferox</i>	Ranunculaceae	Reporter on Economic Products to the Govt. of India	Janikanda, Bushahr	07.02.1901		471	Sushreya Pal
236	BSIS000013620	<i>Aconitum falconeri</i>	Ranunculaceae	Reporter on Economic Products to the Govt. of India	Nogli range, Bushahr, Punjab	07.02.1901			Sushreya Pal
237	BSIS000013621	<i>Aconitum spicatum</i>	Ranunculaceae	Reporter on Economic Products to the Govt. of India	Sandakphu, Sikkim	25.01.1901		492	Sushreya Pal
238	BSIS000013622	<i>Aconitum laciniatum</i>	Ranunculaceae	Reporter on Economic Products to the Govt. of India	Sandakphu, Sikkim	19.10.1896		497	Sushreya Pal
239	BSIS000013623	<i>Aconitum laciniatum</i>	Ranunculaceae	Reporter on Economic Products to the Govt. of India	Sandakphu, Sikkim	30.10.1913		509	Sushreya Pal
240	BSIS000013624	<i>Aconitum laciniatum</i>	Ranunculaceae	I. H. Burkill	Top of Sandakphu	18.05.1909	32015	507	Sushreya Pal
241	BSIS000013625	<i>Aconitum laciniatum</i>	Ranunculaceae		Sandakphu, Sikkim	30.10.1913		510	Sushreya Pal
242	BSIS000013626	<i>Aconitum falconeri</i>	Ranunculaceae	Reporter on Economic Products to the Govt. of India	Almora, NWP	05.11.1901		466	Sushreya Pal
243	BSIS000013627	<i>Aconitum falconeri</i>	Ranunculaceae	Reporter on Economic Products to the Govt. of India	Almora, NWP	05.11.1901		467	Sushreya Pal

Annexure 1 (Metadata of Digitised Herbarium specimens at BSIS with Barcode)

244	BSIS000013628	<i>Aconitum ferox</i>	Ranunculaceae	Reporter on Economic Products to the Govt. of India	Almora, NWP	05.11.1901		468	Sushreya Pal
245	BSIS000013629	<i>Thalictrum javanicum</i>	Ranunculaceae	I. H. Burkill	Between Sandakphu & Phallut	19.10.1904	25239	154	Sushreya Pal
246	BSIS000013630	<i>Thalictrum javanicum</i>	Ranunculaceae		Landour, Mussourie, NWP	Sep/1900		157	Sushreya Pal
247	BSIS000013631	<i>Thalictrum javanicum</i>	Ranunculaceae		Par manija, Bilaspur	02.09.1903	20370	162	Sushreya Pal
248	BSIS000013632	<i>Thalictrum javanicum</i>	Ranunculaceae		Par manija, Bilaspur	02.09.1903	20370	161	Sushreya Pal
249	BSIS000013633	<i>Thalictrum</i> sp	Ranunculaceae	Reporter on Economic Products to the Govt. of India	Calcutta	17.12.1906		171	Sushreya Pal
250	BSIS000013634	<i>Thalictrum chelidonii</i>	Ranunculaceae	I. H. Burkill	Singlila	20.10.1904	25273	138	Sushreya Pal
251	BSIS000013635	<i>Thalictrum chelidonii</i>	Ranunculaceae	I. H. Burkill	Phallut, Darjeeling	21.10.1904	25337	140	Sushreya Pal
252	BSIS000013636	<i>Thalictrum minus</i>	Ranunculaceae		Jangmarg, Kashmir	26.01.1914		170	Sushreya Pal
253	BSIS000013637	<i>Anemone vitifolia</i>	Ranunculaceae	Kalka Prasad	Jakhu, Simla	07.07.1911	35513	139	Sushreya Pal
254	BSIS000013638	<i>Anemone vitifolia</i>	Ranunculaceae	Reporter on Economic Products to the Govt. of India	Landour, Mussourie, NWP	Sep/1900		101	Sushreya Pal
255	BSIS000013639	<i>Anemone rupicola</i>	Ranunculaceae	Reporter on Economic Products to the Govt. of India	Kulu dist, Punjab	06.03.1903		103	Sushreya Pal
256	BSIS000013640	<i>Anemone obtusiloba</i>	Ranunculaceae	Reporter on Economic Products to the Govt. of India	Narkonda, Punjab	June 1893		118	Sushreya Pal
257	BSIS000013641	<i>Anemone obtusiloba</i>	Ranunculaceae	I. H. Burkill	Sabarkum & Phallut	20.05.1909	32040	114	Sushreya Pal

Annexure 1 (Metadata of Digitised Herbarium specimens at BSIS with Barcode)

258	BSIS000013642	<i>Anemone obtusiloba</i>	Ranunculaceae	I. H. Burkill	Sabarkum & Phallut	20.05.1909	32042	112	Sushreya Pal
259	BSIS000013643	<i>Anemone obtusiloba</i>	Ranunculaceae	I. H. Burkill	Phallut, Darjeeling	29.09.1906	27646	110	Sushreya Pal
260	BSIS000013644	<i>Anemone obtusiloba</i>	Ranunculaceae	I. H. Burkill	North of Sandakphu	20.05.1909	32020	115	Sushreya Pal
261	BSIS000013645	<i>Anemone rivularis</i>	Ranunculaceae	Reporter on Economic Products to the Govt. of India	Chonki, Suket	30.06.1903	20042	125	Sushreya Pal
262	BSIS000013646	<i>Anemone rivularis</i>	Ranunculaceae	Kalka Prasad	Jakhu, Simla	17.07.1911	35512	128	Sushreya Pal
263	BSIS000013647	<i>Anemone rivularis</i>	Ranunculaceae	Reporter on Economic Products to the Govt. of India	Simla, Punjab	07.09.1900	15057	127	Sushreya Pal
264	BSIS000013648	<i>Coptis testa</i>	Ranunculaceae	Reporter on Economic Products to the Govt. of India	Sadiya	10.04.1906		230	Sushreya Pal
265	BSIS000013649	<i>Coptis testa</i>	Ranunculaceae	R.S. Kenneda	Echindon	22.01.1913		231	Sushreya Pal
266	BSIS000013650	<i>Aconitum ferox</i>	Ranunculaceae	Reporter on Economic Products to the Govt. of India	Sandakphu, Sikkim	25.01.1899	7038	499	Sushreya Pal
267	BSIS000013651	<i>Aconitum spicatum</i>	Ranunculaceae	I. H. Burkill	Summit of Sandakphu	27.09.1906	27602	491	Sushreya Pal
268	BSIS000013652	<i>Aconitum laciniatum</i>	Ranunculaceae	Reporter on Economic Products to the Govt. of India	Sandakphu, Sikkim	15.02.1899		500	Sushreya Pal
269	BSIS000013653	<i>Aconitum laciniatum</i>	Ranunculaceae	I. H. Burkill	Summit of Sandakphu	27.09.1906	27611	506A	Sushreya Pal
270	BSIS000013654	<i>Aconitum laciniatum</i>	Ranunculaceae	I. H. Burkill	Sandakphu	18.10.1904	25192	503	Sushreya Pal
271	BSIS000013655	<i>Aconitum laciniatum</i>	Ranunculaceae	I. H. Burkill	Summit of Sandakphu	27.09.1906	27603	505	Sushreya Pal
272	BSIS000013656	<i>Aconitum laciniatum</i>	Ranunculaceae	Reporter on Economic Products to the Govt. of India	Sandakphu, Sikkim	15.02.1899		501	Sushreya Pal

Annexure 1 (Metadata of Digitised Herbarium specimens at BSIS with Barcode)

273	BSIS000013657	<i>Aconitum spicatum</i>	Ranunculaceae	Reporter on Economic Products to the Govt. of India	Phallut, Darjeeling	10.12.1908		484	Sushreya Pal
274	BSIS000013658	<i>Aconitum spicatum</i>	Ranunculaceae	I. H. Burkill	Sandakphu	23.10.1904	25392	486	Sushreya Pal
275	BSIS000013659	<i>Actaea spicata</i>	Ranunculaceae		Pregcho, Bushahr, Punjab	07.07.1889	3305	533	Sushreya Pal
276	BSIS000013660	<i>Aconitum heterophylloides</i>	Ranunculaceae	Reporter on Economic Products to the Govt. of India	Darjeeling, Bengal	31.07.1900		513	Sushreya Pal
277	BSIS000013661	<i>Aconitum heterophylloides</i>	Ranunculaceae	Reporter on Economic Products to the Govt. of India	Darjeeling, Bengal	31.07.1900		514	Sushreya Pal
278	BSIS000013662	<i>Aconitum heterophylloides</i>	Ranunculaceae	I. H. Burkill	Phallut, Darjeeling	19.10.1904	25265	516	Sushreya Pal
279	BSIS000013663	<i>Aconitum chasmanthum</i>	Ranunculaceae	Reporter on Economic Products to the Govt. of India	Gilgit, Kashmir	27.09.1901		293	Sushreya Pal
280	BSIS000013664	<i>Aconitum ferox</i>	Ranunculaceae		Banikanda, Bushahr, Panjab	18.10.1898		456	Sushreya Pal
281	BSIS000013665	<i>Dillenia indica</i>	Dilleniaceae						Shrabasti Das
282	BSIS000013666	<i>Dillenia indica</i>	Dilleniaceae						Shrabasti Das
283	BSIS000013667	<i>Dillenia indica</i>	Dilleniaceae						Shrabasti Das
284	BSIS000013668	<i>Wormia triquetra</i>	Dilleniaceae			01.04.1919			Shrabasti Das
285	BSIS000013669	<i>Dillenia indica</i>	Dilleniaceae			00.04.1913			Shrabasti Das
286	BSIS000013670	<i>Dillenia indica</i>	Dilleniaceae			00.04.1913			Shrabasti Das
287	BSIS000013671	<i>Dillenia pentagyna</i>	Dilleniaceae		Agumbe Stali Forest, Mysore	19.05.1952			Shrabasti Das
288	BSIS000013672	<i>Dillenia pentagyna</i>	Dilleniaceae	B.Krishna	Chapramari forest , Jalpaiguri	17.03.1973	273	48068	Shrabasti Das

Annexure 1 (Metadata of Digitised Herbarium specimens at BSIS with Barcode)

289	BSIS000013673	Dillenia pentagyna	Dilleniaceae	B.Krishna	Chapramari forest , Jalpaiguri	17.03.1973	273	48069	Shrabasti Das
290	BSIS000013674	Dillenia pentagyna	Dilleniaceae		Blikhal	14.04.1989	144	568	Shrabasti Das
291	BSIS000013675	Dillenia pentagyna	Dilleniaceae					567	Shrabasti Das
292	BSIS000013676	Dillenia pentagyna	Dilleniaceae	N.C. Mundol	Royal Botanic garden	00.07.1931		564	Shrabasti Das
293	BSIS000013677	Dillenia pentagyna	Dilleniaceae	Reporter on Economic Products to the Govt. of India	Kolhapur, Bombay Diwan	19.01.1907		572	Sushreya Pal
294	BSIS000013678	Dillenia pentagyna	Dilleniaceae	Reporter on Economic Products to the Govt. of India	Alirajpur, Central India	07.01.1897		571	Sushreya Pal
295	BSIS000013679	Dillenia pentagyna	Dilleniaceae	Deputy Conservator of Forests	Andamans	22.12.1905	21	560	Sushreya Pal
296	BSIS000013680	Dillenia pentagyna	Dilleniaceae	Deputy Conservator of Forests	Andamans	22.12.1905	21	559	Sushreya Pal
297	BSIS000013681	Dillenia indica	Dilleniaceae	C.B. Clarke	Assam	1888			Sushreya Pal
298	BSIS000013682	Dillenia indica	Dilleniaceae	Kalka Prasad	Calcutta Maidan	1900		550	Sushreya Pal
299	BSIS000013683	Dillenia indica	Dilleniaceae		Kurseong, Bengal	20.03.1903		553	Sushreya Pal
300	BSIS000013684	Dillenia indica	Dilleniaceae		Calcutta	10.06.1902		548	Sushreya Pal
301	BSIS000013685	Dillenia sarmentosa	Dilleniaceae	Pratap Ch, Bhattacharjee	Sibsagar	10.09.1910		540	Sushreya Pal
302	BSIS000013686	Dillenia sarmentosa	Dilleniaceae		Sibsagar	12.01.1910		538	Sushreya Pal
303	BSIS000013687	Dillenia pulcherrima	Dilleniaceae	I. H. Burkill	Taorzza bayan, Burma	02.03.1904	23948	555	Sushreya Pal
304	BSIS000013688	Dillenia pulcherrima	Dilleniaceae	I. H. Burkill	Dawna range, Burma	02.03.1908	30263	557	Sushreya Pal
305	BSIS000013689	Dillenia pentagyna	Dilleniaceae	Reporter on Economic Products to the Govt. of India	Pegu Circle, Burma	10.06.1904		563	Sushreya Pal
306	BSIS000013690	Dillenia pentagyna	Dilleniaceae	Reporter on Economic Products	Pegu Circle, Burma	16.06.1904		562	Sushreya Pal

Annexure 1 (Metadata of Digitised Herbarium specimens at BSIS with Barcode)

				to the Govt. of India					
307	BSIS000013691	<i>Dillenia pentagyna</i>	Dilleniaceae	Reporter on Economic Products to the Govt. of India	Pegu Circle, Burma	16.06.1904		561	Sushreya Pal
308	BSIS000013692	<i>Dillenia indica</i>	Dilleniaceae	Deputy Conservator of Forests	Chittagong	12.05.1904		552	Sushreya Pal
309	BSIS000013693	<i>Dillenia indica</i>	Dilleniaceae	D. Hooper	Chittagong	07.10.1905	25845	551	Sushreya Pal
310	BSIS000013694	<i>Dillenia pentagyna</i>	Dilleniaceae	Deputy Conservator of Forests	Chittagong	15.06.1905		569	Sushreya Pal
311	BSIS000013695	<i>Illicium griffithii</i>	Schisandraceae		Sadya, Upper Assam	1918		573	Sushreya Pal
312	BSIS000013696	<i>Illicium manipurense</i>	Schisandraceae	K.S. Srinivasan	Bomdila, N.E.F.A. Assam	12.05.1955		43198	Sushreya Pal
313	BSIS000013697	<i>Illicium manipurense</i>	Schisandraceae	K.S. Srinivasan	Bomdila, N.E.F.A. Assam	12.05.1955		43197	Sushreya Pal
314	BSIS000013698	<i>Magnolia pterocarpa</i>	Magnoliaceae	H.G. Carter	Dibrugarh	03.04.1915		307	Shrabasti Das
315	BSIS000013699	<i>Magnolia pterocarpa</i>	Magnoliaceae	H.G. Carter	Lakhimpur district	05.11.1915	394	586	Shrabasti Das
316	BSIS000013700	<i>Talauma andanatica</i>	Magnoliaceae		Andaman	26.09.1998			Shrabasti Das
317	BSIS000013701	<i>Talauma andanatica</i>	Magnoliaceae		Andaman			581	Shrabasti Das
318	BSIS000013702	<i>Talauma hodgsoni</i>	Magnoliaceae	R.E.P.	Assam	08.03.1895	11376		Shrabasti Das
319	BSIS000013703	<i>Magnolia campbellii</i>	Magnoliaceae		Sodepur, 24 Pgs			584	Shrabasti Das
320	BSIS000013704	<i>Magnolia grandiflora</i>	Magnoliaceae	K.S. Srinivasan				45662	Shrabasti Das
321	BSIS000013705	<i>Manglietia caveana</i>	Magnoliaceae				394	587	Shrabasti Das
322	BSIS000013706	<i>Michelia champaca</i>	Magnoliaceae		Shaharanpur	11.06.1903	22	601	Shrabasti Das
323	BSIS000013707	<i>Michelia champaca</i>	Magnoliaceae	I. H. Burkill	Katha	26.01.1904	22702	591	Shrabasti Das
324	BSIS000013708	<i>Michelia champaca</i>	Magnoliaceae		Sagaing , Burma	22.03.1907	26941		Shrabasti Das
325	BSIS000013709	<i>Michelia manipurensis</i>	Magnoliaceae		Japoo, Assam	15.05.1895	11455	617	Shrabasti Das
326	BSIS000013710	<i>Michelia manipurensis</i>	Magnoliaceae		Japoo, Assam	15.05.1895	11455	616	Shrabasti Das

Annexure 1 (Metadata of Digitised Herbarium specimens at BSIS with Barcode)

327	BSIS000013711	<i>Michelia nilagarica</i>	Magnoliaceae			00.00.1961		608	Shrabasti Das
328	BSIS000013712	<i>Michelia excelsa</i>	Magnoliaceae	K.S. Srinivasan	Bomdila, N.E.F.A. Assam	16.05.1955		42516	Shrabasti Das
329	BSIS000013713	<i>Michelia excelsa</i>	Magnoliaceae	K.S. Srinivasan	Bomdila, N.E.F.A. Assam	18.05.1955		42819	Shrabasti Das
330	BSIS000013714	<i>Michelia champaca</i>	Magnoliaceae		Badarpur	13.11.1924	38321	596	Shrabasti Das
331	BSIS000013715	<i>Michelia champaca</i>	Magnoliaceae	S.K. Mandal	Rachi	30.12.1987	6022	51575	Shrabasti Das
332	BSIS000013716	<i>Michelia champaca</i>	Magnoliaceae	D. Hooper	Magban, Rangamati, Chittagong	02.11.1898		595	Shrabasti Das
333	BSIS000013717	<i>Michelia champaca</i>	Magnoliaceae	K.S. Srinivasan	Indian Museum	29.04.1959	2201	45660	Shrabasti Das
334	BSIS000013718	<i>Michelia champaca</i>	Magnoliaceae	K.S. Srinivasan	Indian Museum	29.04.1959	2201	45663	Shrabasti Das
335	BSIS000013719	<i>Michelia champaca</i>	Magnoliaceae	Dr. King		00.00.1893		594	Shrabasti Das
336	BSIS000013720	<i>Michelia champaca</i>	Magnoliaceae		Delhi	20.08.1900	14493	603	Shrabasti Das
337	BSIS000013721	<i>Michelia montacea</i>	Magnoliaceae		Sibsagar, Assam	21.06.1902	16629	612	Shrabasti Das
338	BSIS000013722	<i>Michelia montacea</i>	Magnoliaceae		Sibsagar, Assam		16629	613	Shrabasti Das
339	BSIS000013723	<i>Schizandra grandiflora</i>	Magnoliaceae	J.H. Lace	North-Western Himalaya	06.07.1901	2157	622	Shrabasti Das
340	BSIS000013724	<i>Schizandra grandiflora</i>	Magnoliaceae	Chas. A. Webb.	North-Western Himalaya	20.05.1893		619	Shrabasti Das
341	BSIS000013725	<i>Caryopteris wallichiana</i>	Annonaceae	I. H. Burkill	Suket state	16.05.1906	26914	24038	Shrabasti Das
342	BSIS000013726	<i>Unona discolor</i>	Annonaceae	K.C. Malick	Manipur	29.11.1973	998	46632	Shrabasti Das
343	BSIS000013727	<i>Unona discolor</i>	Annonaceae	K.C. Malick	Manipur	29.11.1973	998	46631	Shrabasti Das
344	BSIS000013728	<i>Unona discolor</i>	Annonaceae	K.C. Malick	Manipur	29.11.1973	998	46630	Shrabasti Das
345	BSIS000013729	<i>Unona discolor</i>	Annonaceae		Gonda	13.07.1905	24653	696	Shrabasti Das
346	BSIS000013730	<i>Anona squamosa</i>	Annonaceae	K. C. Malick	Paikmal, Sambalpur, Orissa	30.08.1975	1747	49237	Shrabasti Das
347	BSIS000013731	<i>Anona squamosa</i>	Annonaceae	N.C. Saha	Lalpahari, Birbhum District	12.08.1988	6201	53489	Shrabasti Das
348	BSIS000013732	<i>Anona squamosa</i>	Annonaceae	N.C. Saha					Shrabasti Das
349	BSIS000013733	<i>Anona squamosa</i>	Annonaceae	H.G. Carter	Dibrugarh, Lakhimpur	09.05.1915	56a	661	Shrabasti Das
350	BSIS000013734	<i>Anona squamosa</i>	Annonaceae	S.K. Mandal	Hata, Torpa, Ranchi	07.06.1983	4464	50525	Shrabasti Das

Annexure 1 (Metadata of Digitised Herbarium specimens at BSIS with Barcode)

351	BSIS000013735	Anona squamosa	Annonaceae	K.S. Srinivasan	Indian Museum	29.04.1959	2373	45667	Shrabasti Das
352	BSIS000013736	Anona squamosa	Annonaceae	K.S. Srinivasan	Indian Museum	29.04.1959	2245	45666	Shrabasti Das
353	BSIS000013737	Anona squamosa	Annonaceae	K.S. Srinivasan	Indian Museum	29.04.1959	2373	45668	Shrabasti Das
354	BSIS000013738	Anona reticulata	Annonaceae	S.K. Mandal	Kalikapur Village, West Bengal	09.10.1977	227	49707	Shrabasti Das
355	BSIS000013739	Anona palustris	Annonaceae	M. Harlless		28.09.1898		678	Shrabasti Das
356	BSIS000013740	Anona palustris	Annonaceae	S.N. Bal	Gawhati Circuit House	23.11.1925	872	680	Shrabasti Das
357	BSIS000013741	Anona palustris	Annonaceae	S.N. Bal	Gawhati Circuit House	23.11.1925		681	Shrabasti Das
358	BSIS000013742	Polyalthia suberosa	Annonaceae	H.G. Carter	Tollygunge, Kolkata	00.00.1917		649	Shrabasti Das
359	BSIS000013743	Polyalthia suberosa	Annonaceae	H.G. Carter	Tollygunge, Kolkata	00.00.1917		650	Shrabasti Das
360	BSIS000013744	Polyalthia suberosa	Annonaceae	D.N. Enhassarshi	Tetulberia, Gorla, 24 Prganas	11.09.1961		46005	Shrabasti Das
361	BSIS000013745	Polyalthia longifolia	Annonaceae	K.S. Srinivasan	Indian Museum	29.04.1959	2279	45664	Shrabasti Das
362	BSIS000013746	Polyalthia longifolia	Annonaceae	K.S. Srinivasan	Indian Museum	29.04.1959		45665	Shrabasti Das
363	BSIS000013747	Polyalthia longifolia	Annonaceae	PJMEHTA	Rajpipla, Gujrat	19.03.1974	1775	45058	Shrabasti Das
364	BSIS000013748	Popowia nitida	Annonaceae	K.S. Srinivasan	Car Nicobar, Nicobar Islands	18.02.1953		45838	Shrabasti Das
365	BSIS000013749	Popowia nitida	Annonaceae	K.S. Srinivasan	Car Nicobar, Nicobar Islands	18.02.1953		45837	Shrabasti Das
366	BSIS000013750	Popowia nitida	Annonaceae	K.S. Srinivasan	Car Nicobar, Nicobar Islands	18.02.1953		45836	Shrabasti Das
367	BSIS000013751	Artabotrys odoratissimus	Annonaceae	H.G. Carter	Lakhimpur, Dibrugarh	21.10.1915	844	626	Shrabasti Das
368	BSIS000013752	Artabotrys odoratissimus	Annonaceae	H.G. Carter	Lakhimpur, Dibrugarh	21.10.1915	344	627	Shrabasti Das
369	BSIS000013753	Miliasa roxburghiana	Annonaceae	B.Krishna	Kalighora West (Darjeeling)	27.03.1973	395	48072	Shrabasti Das
370	BSIS000013754	Artabotrys odoratissimus	Annonaceae		Kantalichampa, Bhichampa	07.05.1947	622	630	Shrabasti Das
371	BSIS000013755	Polyalthia longifolia	Annonaceae		Calcutta	00.09.1902		646	Shrabasti Das
372	BSIS000013756	Polyalthia longifolia	Annonaceae		Saharanpur, NW Province	11.06.1903		643	Shrabasti Das

Annexure 1 (Metadata of Digitised Herbarium specimens at BSIS with Barcode)

373	BSIS000013757	<i>Polyalthia longifolia</i>	Annonaceae	Edmund Candler, I.H. Burkill	Parlakimedi, N. Circars	07.10.1903	20538	655	Shrabasti Das
374	BSIS000013758	<i>Miliusa velutina</i>	Annonaceae	H.R.E.P.	Nainital, Kumaun, Uttarakhand	01.07.1913		688	Shrabasti Das
375	BSIS000013759	<i>Saccopetalum tomentosum</i>	Annonaceae	Kalka Prasad	Dhansai, Deccan Plateau	30.07.1903	20237	692	Shrabasti Das
376	BSIS000013760	<i>Cananga odorata</i>	Annonaceae	R.E.P.	Sagaing, Burma	22.04.1907	26942	641	Shrabasti Das
377	BSIS000013761	<i>Cananga odorata</i>	Annonaceae	R.E.P.	Sagaing, Burma	10.08.1907		642	Shrabasti Das
378	BSIS000013762	<i>Cananga odorata</i>	Annonaceae		Teuasserium, Rangoon	07.12.1905	806	638	Shrabasti Das
379	BSIS000013763	<i>Cananga odorata</i>	Annonaceae	Mg. Po In Dc	Raugoon, Burma	07.12.1905	806	640	Shrabasti Das
380	BSIS000013764	<i>Cananga odorata</i>	Annonaceae			29.06.1905		634	Shrabasti Das
381	BSIS000013765	<i>Cananga odorata</i>	Annonaceae					637	Shrabasti Das
382	BSIS000013766	<i>Annona squamosa</i>	Annonaceae	R.E.P.	North Arcot, Madras	07.12.1978	152	670	Shrabasti Das
383	BSIS000013767	<i>Annona squamosa</i>	Annonaceae	R.E.P.	Madras	09.10.1903		668	Shrabasti Das
384	BSIS000013768	<i>Annona squamosa</i>	Annonaceae	R.E.P.	Madras	09.10.1903		667	Shrabasti Das
385	BSIS000013769	<i>Annona squamosa</i>	Annonaceae	R.E.P.	Saharanpur, NW Province	01.05.1903		665	Shrabasti Das
386	BSIS000013770	<i>Annona squamosa</i>	Annonaceae	R.E.P.	Khurda, Puri Division	15.07.1909		663	Shrabasti Das
387	BSIS000013771	<i>Annona squamosa</i>	Annonaceae	I. H. Burkill	Calcutta Market	06.09.1991	33438	662	Shrabasti Das
388	BSIS000013772	<i>Annona reticulata</i>	Annonaceae			01.05.1903		673	Shrabasti Das
389	BSIS000013773	<i>Annona reticulata</i>	Annonaceae	C.B. Clarke	Assam			672	Shrabasti Das
390	BSIS000013774	<i>Cocculus mollis</i>	Menispermaceae	G. Watt.	Konoma, Naga Hills, Assam	00.05.1885	11555	735	Shrabasti Das
391	BSIS000013775	<i>Cocculus hirsutus</i>	Menispermaceae	K.S. Srinivasan	Sudur state foret, Mysore	26.05.1952		43954	Shrabasti Das
392	BSIS000013776	<i>Cocculus villosus</i>	Menispermaceae	S.N. Bal	Dacca	06.10.1925	842	720	Shrabasti Das
393	BSIS000013777	<i>Cocculus laurifolius</i>	Menispermaceae	D. Hooper	Dwarahat	17.10.1912	38952	732	Shrabasti Das
394	BSIS000013778	<i>Stephania rotunda</i>	Menispermaceae	I. H. Burkill	Burma	00.12.1908			Shrabasti Das

Annexure 1 (Metadata of Digitised Herbarium specimens at BSIS with Barcode)

395	BSIS000013779	Stephania rotunda	Menispermaea e	I. H. Burkill	Burma	00.12.1908			Shrabasti Das
396	BSIS000013780	Stephania hernandifolia	Menispermaea e	R.E.P.	Rangoon	12.08.1908	25761	49687	Shrabasti Das
397	BSIS000013781	Stephania hernandifolia	Menispermaea e	R.K.Das	Cherapunjee	00.06.1911	34943	49665	Shrabasti Das
398	BSIS000013782	Stephania hernandifolia	Menispermaea e	H.G. Carter	Ballygunge, Kolkata	00.05.1914		19695	Shrabasti Das
399	BSIS000013783	Stephania hernandifolia	Menispermaea e		Hazarikhil, Chittagong	17.04.1906	25672	49688	Shrabasti Das
400	BSIS000013784	Stephania hernandifolia	Menispermaea e	P.M. Debbarman	Agartala	31.12.1914	588	49689	Sushreya Pal
401	BSIS000013785	Stephania hernandifolia	Menispermaea e					49690	Sushreya Pal
402	BSIS000013786	Stephania hernandifolia	Menispermaea e	Babu U.C. Pal	Ullapara	24.03.1909	31849	49694	Sushreya Pal
403	BSIS000013787	Stephania hernandifolia	Menispermaea e	J.D. Hooper				16145	Sushreya Pal
404	BSIS000013788	Stephania hernandifolia	Menispermaea e	K.S. Srinivasan	Assam	Dec-56		42995	Sushreya Pal
405	BSIS000013789	Stephania hernandifolia	Menispermaea e	P.M. Debbarman	Agartala	Oct-15	118	49664	Sushreya Pal
406	BSIS000013790	Stephania hernandifolia	Menispermaea e	H.G. Carter	Dibrugarh	21.03.1914	131	49666	Sushreya Pal
407	BSIS000013791	Stephania hernandifolia	Menispermaea e	P.M. Debbarman	Agartala	28.12.1914	295	49667	Sushreya Pal
408	BSIS000013792	Stephania hernandifolia	Menispermaea e	K.S. Srinivasan	Nepal	02.11.1950		44073	Sushreya Pal
409	BSIS000013793	Cissampelos pareira	Menispermaea e	K.M. Sebastine	Thekkumalai Hills	06.12.1956	1621	3110	Sushreya Pal
410	BSIS000013794	Cissampelos pareira	Menispermaea e		Bhajam	13.04.1939	127	49885	Sushreya Pal
411	BSIS000013795	Cissampelos pareira	Menispermaea e	J. H. Lace	Chamba	25.05.1898	1807	745	Sushreya Pal

Annexure 1 (Metadata of Digitised Herbarium specimens at BSIS with Barcode)

412	BSIS000013796	Cissampelos pareira	Menispermaea e	B. Krishna	Jalpaiguri dist	03.04.1973	487	48073	Sushreya Pal
413	BSIS000013797	Cissampelos pareira	Menispermaea e	S.N. Bal	Majgaon, Sylhet	05.10.1925	378	49634	Sushreya Pal
414	BSIS000013798	Cissampelos pareira	Menispermaea e	B. Krishna	Chapramari forest , Jalpaiguri	17.03.1973	271	48674	Sushreya Pal
415	BSIS000013799	Cyclea wallichii	Menispermaea e	D. Hooper	Chittagong	07.10.1905	25870	49676	Sushreya Pal
416	BSIS000013800	Cyclea peltata	Menispermaea e	K.S. Srinivasan	Kevekalte forest, Mysore	15.05.1952		43947	Sushreya Pal
417	BSIS000013801	Cyclea peltata	Menispermaea e	K.S. Srinivasan	Mysore	01.05.1952		43945	Sushreya Pal
418	BSIS000013802	Pycnarrhena planiflora	Menispermaea e		Assam	1893		761	Sushreya Pal
419	BSIS000013803	Tiliacora racemosa	Menispermaea e		Nuchiapada	07.06.1940	809	714	Sushreya Pal
420	BSIS000013804	Tiliacora acuminata	Menispermaea e				3875		Sushreya Pal
421	BSIS000013805	Tinospora cordifolia	Menispermaea e	N. C. Saha	Alambazar, Nalhati	17.08.1988	6274	53413	Sushreya Pal
422	BSIS000013806	Tinospora cordifolia	Menispermaea e	N. C. Saha	Alambazar, Nalhati	17.08.1988	6274	53412	Sushreya Pal
423	BSIS000013807	Tinospora cordifolia	Menispermaea e	B. Krishna	Kalijhora, Darjeeling dist	25.03.1973	379	48076	Sushreya Pal
424	BSIS000013808	Tinospora cordifolia	Menispermaea e	B. Krishna	Kalijhora, Darjeeling dist	25.03.1973	379	48077	Sushreya Pal
425	BSIS000013809	Tinospora crisha	Menispermaea e		Shillong	25.10.1924	112	38365	Sushreya Pal
426	BSIS000013810	Tinospora cordifolia	Menispermaea e	Reporter on Economic Products of India	Madras	09.08.1904		23242	Sushreya Pal
427	BSIS000013811	Tinospora cordifolia	Menispermaea e	H. G. Carter	Puri	Jun/1916	E.B. 27		Sushreya Pal

Annexure 1 (Metadata of Digitised Herbarium specimens at BSIS with Barcode)

428	BSIS000013812	Coscinium fenestratum	Menispermaea e		Kerala	15.11.1973	685	43433	Sushreya Pal
429	BSIS000013813	Cissampelos pareira	Menispermaea e	K.C. Malick	Matha, Purulia	12.09.1964	110		Sushreya Pal
430	BSIS000013814	Cissampelos pareira	Menispermaea e	K.C. Malick	Gurenda, Gandhamardan, Sambalpur	23.08.1975	1648	49385	Sushreya Pal
431	BSIS000013815	Cissampelos pareira	Menispermaea e	K.C. Malick	Gurenda, Gandhamardan, Sambalpur	23.08.1975	1648	49234	Sushreya Pal
432	BSIS000013816	Cissampelos pareira	Menispermaea e	K.C. Malick	Gurenda, Gandhamardan, Sambalpur	23.08.1975	1649	49283	Sushreya Pal
433	BSIS000013817	Cissampelos pareira	Menispermaea e	K.C. Malick	Gurenda, Gandhamardan, Sambalpur	23.08.1975	1649	49282	Sushreya Pal
434	BSIS000013818	Cissampelos pareira	Menispermaea e	K.C. Malick	Gurenda, Gandhamardan, Sambalpur	23.08.1975	1652	49273	Sushreya Pal
435	BSIS000013819	Cissampelos pareira	Menispermaea e	K.C. Malick	Gurenda, Gandhamardan, Sambalpur	23.08.1975	1652	49274	Sushreya Pal
436	BSIS000013820	Cissampelos pareira	Menispermaea e	K.C. Malick	Gurenda, Gandhamardan, Sambalpur	23.08.1975	1648	49277	Sushreya Pal
437	BSIS000013821	Cissampelos pareira	Menispermaea e	Kalka Prasad	Manharpur	07.11.1903	19775	49633	Sushreya Pal
438	BSIS000013822	Cissampelos pareira	Menispermaea e	R.K.Das	Rangpo	03.11.1909	34058	49887	Sushreya Pal
439	BSIS000013823	Cissampelos pareira	Menispermaea e	R.K.Das	Rangpo	03.11.1909	34058	49682	Sushreya Pal
440	BSIS000013824	Cissampelos pareira	Menispermaea e		Parlakimedi, N. Circars		20435	758A	Sushreya Pal

Annexure 1 (Metadata of Digitised Herbarium specimens at BSIS with Barcode)

441	BSIS000013825	Cissampelos pareira	Menispermaea e		Jobat Alirajpur	26.07.1903		758	Sushreya Pal
442	BSIS000013826	Cissampelos pareira	Menispermaea e		Narshingarh, Bhopal	14.10.1903		757	Sushreya Pal
443	BSIS000013827	Cissampelos pareira	Menispermaea e		Narshingarh, Bhopal	14.10.1903		756	Sushreya Pal
444	BSIS000013828	Cissampelos pareira	Menispermaea e		Alirajpur, Central India	14.05.1898		755	Sushreya Pal
445	BSIS000013829	Cissampelos pareira	Menispermaea e	Kalka Prasad	Sukwari maihar state	24.08.1903	20319	754	Sushreya Pal
446	BSIS000013830	Cissampelos pareira	Menispermaea e	Kalka Prasad	Sukwari maihar state	24.08.1903	20319	753	Sushreya Pal
447	BSIS000013831	Cissampelos pareira	Menispermaea e	George Watt	Rowee valley		444	752	Sushreya Pal
448	BSIS000013832	Cissampelos pareira	Menispermaea e	I. H. Burkill	North of Dihur	13.05.1906	26899	750	Sushreya Pal
449	BSIS000013833	Cissampelos pareira	Menispermaea e		Araid Suket	29.06.1903	20023	749	Sushreya Pal
450	BSIS000013834	Cissampelos pareira	Menispermaea e		Simla, Punjab	27.08.1913		748	Sushreya Pal
451	BSIS000013835	Cissampelos pareira	Menispermaea e	Reporter on Economic Products to the Govt of India	Simla, Punjab	25.06.1903	19067	747	Sushreya Pal
452	BSIS000013836	Cissampelos pareira	Menispermaea e	Reporter on Economic Products to the Govt of India	Lahore, Punjab	07.09.1904		746	Sushreya Pal
453	BSIS000013837	Cissampelos pareira	Menispermaea e	W. Gollan	Saharanpur, NW Province	16.12.1904		744	Sushreya Pal
454	BSIS000013838	Cissampelos pareira	Menispermaea e	I. H. Burkill	Burdwan	15.09.1906	27528	49685	Sushreya Pal
455	BSIS000013839	Cissampelos pareira	Menispermaea e		Dumka Damin Sonthal Pgs Bengal	03.03.1913		49886	Sushreya Pal
456	BSIS000013840	Cyclea peltata	Menispermaea e	H. G. A. Leveson	Lweje village, Kachin hills	06.02.1905	25727	49686	Sushreya Pal

Annexure 1 (Metadata of Digitised Herbarium specimens at BSIS with Barcode)

457	BSIS000013841	Parabaena sagittata	Menispermaea e	H. G. A. Leveson	Kachin hilla, Bhamo	10.03.1904	24702	700	Sushreya Pal
458	BSIS000013842	Coscinium fenestratum	Menispermaea e	Reporter on Economic Products to the Govt of India	South Malabar, Madras	09.07.1903	13784	710	Sushreya Pal
459	BSIS000013843	Coscinium fenestratum	Menispermaea e	Reporter on Economic Products to the Govt of India	South Malabar, Madras	09.07.1903	13784	709	Sushreya Pal
460	BSIS000013844	Coscinium fenestratum	Menispermaea e	Reporter on Economic Products to the Govt of India	South Malabar, Madras	09.07.1903		708	Sushreya Pal
461	BSIS000013845	Tinospora racemosa	Menispermaea e	Reporter on Economic Products to the Govt of India	Saharanpur, NW Province	29.06.1903		715	Sushreya Pal
462	BSIS000013846	Tinospora cordifolia	Menispermaea e	I. H. Burkill	Kasod, Akot taluq	18.09.1909	33117		Sushreya Pal
463	BSIS000013847	Tinospora cordifolia	Menispermaea e	Reporter on Economic Products to the Govt of India	Shibpur	24.11.1900			Sushreya Pal
464	BSIS000013848	Fibraurea tinctoria	Menispermaea e	Reporter on Economic Products to the Govt of India	Imphal	21.08.1913	35638	706	Sushreya Pal
465	BSIS000013849	Fibraurea tinctoria	Menispermaea e	Reporter on Economic Products to the Govt of India	Imphal	05.06.1913	35415	705	Sushreya Pal
466	BSIS000013850	Tiliacora tinctoria	Menispermaea e	Nirmal Ch. Chakraborty for I.H. Burkill	Behala, south Calcutta	12.07.1908	27782	713	Sushreya Pal
467	BSIS000013851	Tiliacora tinctoria	Menispermaea e	Nirmal Ch. Chakraborty for I.H. Burkill	Behala, south Calcutta	12.07.1908	27782	712	Sushreya Pal
468	BSIS000013852	Fibraurea tinctoria	Menispermaea e	Reporter on Economic Products to the Govt of India	Lakhimpur, Assam	06.12.1898	9748	702	Sushreya Pal

Annexure 1 (Metadata of Digitised Herbarium specimens at BSIS with Barcode)

469	BSIS000013853	Fibraurea tinctoria	Menispermaea e	Reporter on Economic Products to the Govt of India	Lakhimpur, Assam	06.12.1898	9748	701	Sushreya Pal
470	BSIS000013854	Fibraurea tinctoria	Menispermaea e	Reporter on Economic Products to the Govt of India	Lakhimpur, Assam	06.12.1898	9748	703	Sushreya Pal
471	BSIS000013855	Cocculus villosus	Menispermaea e	I. H. Burkill	Kyankre	08.01.1904	22144	716	Sushreya Pal
472	BSIS000013856	Cocculus villosus	Menispermaea e		Johan Bhopawai, C. India	26.02.1903	19481	722	Sushreya Pal
473	BSIS000013857	Cocculus villosus	Menispermaea e	R.K.Das	Devanandpur			717	Sushreya Pal
474	BSIS000013858	Cocculus villosus	Menispermaea e	J.D. St Joseph	Barwani state forest			724	Sushreya Pal
475	BSIS000013859	Cocculus villosus	Menispermaea e		Alirajpur, Central India	07.01.1897		725	Sushreya Pal
476	BSIS000013860	Cocculus villosus	Menispermaea e	Diwan Chand	Barwani state forest		38	723	Sushreya Pal
477	BSIS000013861	Cocculus lacba	Menispermaea e	Reporter on Economic Products to the Govt of India	Sami Baluchistan	23.06.1904	22	738	Shrabasti Das
478	BSIS000013862	Cocculus lacba	Menispermaea e	Reporter on Economic Products to the Govt of India	Babian Shahrigh, Baluchistan	23.06.1904	22	737	Shrabasti Das
479	BSIS000013863	Cocculus lacba	Menispermaea e	Reporter on Economic Products to the Govt of India	Baluchistan		17220	739	Shrabasti Das
480	BSIS000013864	Cocculus villosus	Menispermaea e	I.G. Agri	Madras		23104	729	Shrabasti Das
481	BSIS000013865	Cocculus villosus	Menispermaea e	Reporter on Economic Products to the Govt of India	Gunupur, Vizagapatam	05.03.1905	24249	728	Shrabasti Das
482	BSIS000013866	Cocculus villosus	Menispermaea e		Akola Berar	20.11.1902	1925	716A	Shrabasti Das

Annexure 1 (Metadata of Digitised Herbarium specimens at BSIS with Barcode)

483	BSIS000013867	Cocculus villosus	Menispermaea e	I.H. Burkill	Desar Village, South of Shiwani, Panjab	14.01.1903	18140	726	Shrabasti Das
484	BSIS000013868	Cocculus villosus	Menispermaea e	Reporter on Economic Products to the Govt of India	Poona near Surat	28.10.1902	16389	727	Shrabasti Das
485	BSIS000013869	Cocculus villosus	Menispermaea e		Beluchistan, Pab ghalawan		19483	717A	Shrabasti Das
486	BSIS000013870	Cocculus villosus	Menispermaea e		Alirajpur, Central India	12.01.1897	87	721	Shrabasti Das
487	BSIS000013871	Stephania hernandifolia	Menispermaea e	D.Hooper	Mahabaleshwar, Maharashtra	20.09.1910	34607	49696	Shrabasti Das
488	BSIS000013872	Stephania hernandifolia	Menispermaea e	I.H. Burkill	Amboli west of Belgawn	17.11.1902	17040	49697	Shrabasti Das
489	BSIS000013873	Stephania hernandifolia	Menispermaea e	D. Hooper	Baripada, Mayurbhanj, Orissa	03.12.1911	37815	49692	Shrabasti Das
490	BSIS000013874	Stephania hernandifolia	Menispermaea e	Babu U.C. Pal	Ullapara	24.03.1909	31849	49693	Shrabasti Das
491	BSIS000013875	Holboellia latifolia	Menispermaea e	K.S. Srinivasan	Bomdila, N.E.F.A. Assam	14.05.1955		42517	Shrabasti Das
492	BSIS000013876	Holboellia latifolia	Menispermaea e	K.S. Srinivasan	Bomdila, N.E.F.A. Assam	12.05.1955		42802	Shrabasti Das
493	BSIS000013877	Holboellia latifolia	Menispermaea e	K.S. Srinivasan	Bomdila, N.E.F.A. Assam	12.05.1955		42801	Shrabasti Das
494	BSIS000013878	Holboellia latifolia	Menispermaea e	K.S. Srinivasan	Bomdila, N.E.F.A. Assam	18.05.1955		42800	Shrabasti Das
495	BSIS000013879	Holboellia latifolia	Menispermaea e	I.H. Burkill	Jonglu	25.09.1906		778	Shrabasti Das
496	BSIS000013880	Holboellia latifolia	Menispermaea e	K. S. Srinivasan	Bomdila, N.E.F.A. Assam	13.05.1955		42803	Shrabasti Das
497	BSIS000013881	Holboellia latifolia	Menispermaea e	Holboellia latifolia	Tonglu	18.05.1909	30863	779	Shrabasti Das
498	BSIS000013882	Podophyllum emodi	Menispermaea e	Mr. S. N. Bal	Srinagar		961	833	Shrabasti Das

Annexure 1 (Metadata of Digitised Herbarium specimens at BSIS with Barcode)

499	BSIS000013883	Berberis	Menispermaea e		Darjeeling-Changa	23.11.1917		37032	Shrabasti Das
500	BSIS000013884	Berberis	Menispermaea e		Darjeeling	23.11.1917		37032	Shrabasti Das
501	BSIS000013885	Berberis	Menispermaea e		Near Mussourie	18.06.1997		813	Shrabasti Das
502	BSIS000013886	Berberis	Menispermaea e		Simla	00.05.1917	593	766	Shrabasti Das
503	BSIS000013887	Berberis artistata	Berberidaceae	S.K. Mandal	Darjeeling	26.10.1978	3394	49901	Shrabasti Das
504	BSIS000013888	Berberis artistata	Berberidaceae		Fulbari	26.10.1978	3394	49902	Shrabasti Das
505	BSIS000013889	Berberis artistata	Berberidaceae		Simla			794	Shrabasti Das
506	BSIS000013890	Berberis artistata	Berberidaceae	H.G. Carter	Simla	00.05.1917	546	795	Shrabasti Das
507	BSIS000013891	Berberis artistata	Berberidaceae	H.G. Carter	Simla	00.05.1917	560	797	Shrabasti Das
508	BSIS000013892	Berberis nepalensis	Berberidaceae						Shrabasti Das
509	BSIS000013893	Berberis nepalensis	Berberidaceae	S.K. Mandal	Fulbari	26.10.1978	3401	49991	Shrabasti Das
510	BSIS000013894	Berberis asiatica	Berberidaceae	K. S. Srinivasan	Rupa, N.E.F.A., Assam	09.05.1955		43157	Shrabasti Das
511	BSIS000013895	Berberis asiatica	Berberidaceae	K. S. Srinivasan	Nepal	28.10.1950		44077	Shrabasti Das
512	BSIS000013896	Berberis asiatica	Berberidaceae	K. S. Srinivasan	Nepal	28.10.1950		44076	Shrabasti Das
513	BSIS000013897	Berberis asiatica	Berberidaceae	K. S. Srinivasan	Nepal	28.10.1950		44076	Shrabasti Das
514	BSIS000013898	Berberis asiatica	Berberidaceae	K. S. Srinivasan	Rupa, N.E.F.A., Assam	09.05.1955		43156	Shrabasti Das
515	BSIS000013899	Berberis asiatica	Berberidaceae	K. S. Srinivasan	Rupa, N.E.F.A., Assam	09.05.1955		43154	Shrabasti Das
516	BSIS000013900	Berberis asiatica	Berberidaceae	D.Hooper	Ganai	02.10.1912		808	Shrabasti Das
517	BSIS000013901	Berberis insignis	Berberidaceae	K. S. Srinivasan	Bomdila, N.E.F.A. Assam	12.05.1955		42824	Shrabasti Das
518	BSIS000013902	Berberis insignis	Berberidaceae	K. S. Srinivasan	Bomdila, N.E.F.A. Assam	14.05.1955		42515	Shrabasti Das
519	BSIS000013903	Berberis insignis	Berberidaceae	K. S. Srinivasan	Bomdila, N.E.F.A. Assam	12.05.1955		42820	Shrabasti Das
520	BSIS000013904	Berberis insignis	Berberidaceae	K. S. Srinivasan	Bomdila, N.E.F.A. Assam	12.05.1955		42822	Shrabasti Das
521	BSIS000013905	Berberis insignis	Berberidaceae	K. S. Srinivasan	Bomdila, N.E.F.A. Assam	18.05.1955		42823	Shrabasti Das

Annexure 1 (Metadata of Digitised Herbarium specimens at BSIS with Barcode)

522	BSIS000013906	Holboellia latifolia	Berberidaceae	Kalka Prasad	Jangaliagaon, Nainital	14.06.1903	18076	777	Shrabasti Das
523	BSIS000013907	Epimedium elatum	Berberidaceae	Keshaveiuand	Rainawari, Jammu Kashmir	05.03.1908	29	825	Shrabasti Das
524	BSIS000013908	Podophyllum emodi	Berberidaceae	Gensal Gataere	Chitral	00.07.1895		831	Shrabasti Das
525	BSIS000013909	Podophyllum emodi	Berberidaceae	Chas. A. Webb.		02.05.1893		830	Shrabasti Das
526	BSIS000013910	Podophyllum emodi	Berberidaceae	G.H. Cave	Darjeeling	23.11.1917	37021	828	Shrabasti Das
527	BSIS000013911	Podophyllum emodi	Berberidaceae	Messia Smith	Gangtok, Sikkim	15.11.1917		827	Shrabasti Das
528	BSIS000013912	Podophyllum emodi	Berberidaceae		Pangi, 8500ft, Chamba state	18.11.1914		826	Shrabasti Das
529	BSIS000013913	Podophyllum emodi	Berberidaceae	R.E.P.	Kashmir	24.07.1898	11057	834	Shrabasti Das
530	BSIS000013914	Podophyllum emodi	Berberidaceae	R.E.P.	Kashmere	24.07.1898		832	Shrabasti Das
531	BSIS000013915	Berberis nepalensis	Berberidaceae	M. Rogers	Darjeeling		159	784	Shrabasti Das
532	BSIS000013916	Berberis nepalensis	Berberidaceae	Gilbert Rofers	Darjeeling			785	Shrabasti Das
533	BSIS000013917	Berberis vulgaris	Berberidaceae			30.06.1903	19244	783	Shrabasti Das
534	BSIS000013918	Berberis wallichiana	Berberidaceae	I.H. Burkill	Phalut	21.10.1904	25321	817	Shrabasti Das
535	BSIS000013919	Berberis ulichina	Berberidaceae			23.01.1905		821	Shrabasti Das
536	BSIS000013920	Berberis asiatica	Berberidaceae				19461	824	Shrabasti Das
537	BSIS000013921	Berberis asiatica	Berberidaceae	I.H. Burkill	Sandakphu	18.10.1904	25194	822	Shrabasti Das
538	BSIS000013922	Berberis asiatica	Berberidaceae	R.E.P.	Nainital	10.06.1903	18011	812	Shrabasti Das
539	BSIS000013923	Berberis asiatica	Berberidaceae		Saharanpur, NW Province	20.08.0000	112	810	Shrabasti Das
540	BSIS000013924	Berberis asiatica	Berberidaceae	Kalka Prasad	Nainital, Kumaun, Uttarakhand	10.06.1903	18011	811	Shrabasti Das
541	BSIS000013925	Berberis asiatica	Berberidaceae	N. Annandale	Parasnath, Bengal	10.04.1909		809	Shrabasti Das
542	BSIS000013926	Berberis vulgaris	Berberidaceae	R.E.P.	Phallut	21.10.1904	25327	820	Shrabasti Das
543	BSIS000013927	Berberis vulgaris	Berberidaceae	I.H. Burkill	North of Tonglu	19.05.1909	32005	819	Shrabasti Das
544	BSIS000013928	Berberis vulgaris	Berberidaceae	I.H. Burkill	North of Tonglu	19.05.1909	32005	818	Shrabasti Das
545	BSIS000013929	Berberis nepalensis	Berberidaceae	E. Thurston	Mussorie	00.03.1893		789	Shrabasti Das
546	BSIS000013930	Berberis nepalensis	Berberidaceae		Saharanpur, NW Province	30.08.1900	110	788	Shrabasti Das
547	BSIS000013931	Berberis nepalensis	Berberidaceae		Naga Hills	03.09.1894	5149	787	Shrabasti Das

Annexure 1 (Metadata of Digitised Herbarium specimens at BSIS with Barcode)

548	BSIS000013932	<i>Berberis nepalensis</i>	Berberidaceae		Jowai, Assam	29.05.1995		786	Shrabasti Das
549	BSIS000013933	<i>Berberis aristata</i>	Berberidaceae	A. Blyth	Simba, Punjab	00.10.1894		796	Shrabasti Das
550	BSIS000013934	<i>Berberis aristata</i>	Berberidaceae	Kalka Prasad	Nainital	13.06.1903	18062	798	Shrabasti Das
551	BSIS000013935	<i>Berberis coriaria</i>	Berberidaceae	E. Thurston	Simla	00.06.1893		800	Shrabasti Das
552	BSIS000013936	<i>Berberis coriaria</i>	Berberidaceae	E. Thurston	Simla, Punjab	00.06.1893		800	Sushreya Pal
553	BSIS000013937	<i>Berberis coriaria</i>	Berberidaceae	E. Thurston	Simla, Punjab	00.06.1893		802	Sushreya Pal
554	BSIS000013938	<i>Berberis coriaria</i>	Berberidaceae	E. Thurston	Simla, Punjab	00.10.1892		803	Sushreya Pal
555	BSIS000013939	<i>Berberis lycium</i>	Berberidaceae	R.E.P.	Baluchistan	27.05.1903	19541	774	Sushreya Pal
556	BSIS000013940	<i>Berberis lycium</i>	Berberidaceae		Baluchistan		19413	773	Sushreya Pal
557	BSIS000013941	<i>Berberis lycium</i>	Berberidaceae		Bushahr	31.05.1903	15195	772	Sushreya Pal
558	BSIS000013942	<i>Berberis lycium</i>	Berberidaceae	I.H. Burkill	East of Suket	17.05.1906	26945	771	Sushreya Pal
559	BSIS000013943	<i>Berberis lycium</i>	Berberidaceae		Bushahr	31.05.1903	15195	770	Sushreya Pal
560	BSIS000013944	<i>Berberis lycium</i>	Berberidaceae	A. Blyth	Simla, Punjab	Oct 1894		767	Sushreya Pal
561	BSIS000013945	<i>Berberis lycium</i>	Berberidaceae	E. Thurston	Simla, Punjab	Oct 1892		765	Sushreya Pal
562	BSIS000013946	<i>Berberis lycium</i>	Berberidaceae		Simla, Punjab	May 1893		764	Sushreya Pal
563	BSIS000013947	<i>Berberis lycium</i>	Berberidaceae		Saharanpur, NW Province	25.05.1900	113	762	Sushreya Pal
564	BSIS000013948	<i>Coldenia procumbens</i>	Boraginaceae	I.H. Burkill	Amherst dist	12.03.1908	30608	20202	Sushreya Pal
565	BSIS000013949	<i>Ehretia laevis</i>	Boraginaceae	Rev. A Campbell	Pokhuria, Manbhum	22.05.1885	9459	20173	Sushreya Pal
566	BSIS000013950	<i>Nymphaea lotus</i>	Nympheaceae	R.E.P.	Bogra, Bengal	1903		11775	Sushreya Pal
567	BSIS000013951	<i>Nymphaea lotus</i>	Nympheaceae	R.E.P.	Birbhum, Bengal	18.05.1903		11776	Sushreya Pal
568	BSIS000013952	<i>Nymphaea lotus</i>	Nympheaceae	R.E.P.	Katra, Balarampur estate	08.10.1902	16044	11779	Sushreya Pal
569	BSIS000013953	<i>Nymphaea lotus</i>	Nympheaceae	R.E.P.	Manjabsil, Jhansi	07.01.1904		11774	Sushreya Pal
570	BSIS000013954	<i>Nymphaea lotus</i>	Nympheaceae	R.E.P.	Saharanpur, NW Province	Sep-03		11773	Sushreya Pal
571	BSIS000013955	<i>Nymphaea lotus</i>	Nympheaceae	R.E.P.	Gorakhpur	30.10.1903		11772	Sushreya Pal
572	BSIS000013956	<i>Nymphaea lotus</i>	Nympheaceae	Kalka Prasad	Jarra, Ranchi	28.09.1910	34360	11771	Sushreya Pal
573	BSIS000013957	<i>Nymphaea lotus</i>	Nympheaceae		jaipur	24.11.1903	6288	11783	Shrabasti Das
574	BSIS000013958	<i>Nymphaea lotus</i>	Nympheaceae	I.H. Burkill	Champaran	24.11.1903	29351	11780	Shrabasti Das

Annexure 1 (Metadata of Digitised Herbarium specimens at BSIS with Barcode)

575	BSIS000013959	Nymphaea lotus	Nympheaceae	R.E.P.	Rangoon	02.12.1900	31415	11782	Shrabasti Das
576	BSIS000013960	Nymphaea lotus	Nympheaceae	I.H. Burkill			28350	11784	Shrabasti Das
577	BSIS000013961	Nymphaea lotus	Nympheaceae		Saharanpur, NW Province	00.00.1903			Shrabasti Das
578	BSIS000013962	Nymphaea lotus	Nympheaceae		Kristna district , madras	02.03.1904	21681	11802	Shrabasti Das
579	BSIS000013963	Nymphaea lotus	Nympheaceae	R.E.P.	Madhupura, Bhagulpore, Bengal	14.09.1903	152	11803	Sushreya Pal
580	BSIS000013964	Nymphaea lotus	Nympheaceae	R.E.P.	Lakhimpur, Assam	21.04.?	21950	11809	Sushreya Pal
581	BSIS000013965	Nymphaea stellata	Nympheaceae		Kotak & Jhalawar Rajputana	17.11.1903		11789	Sushreya Pal
582	BSIS000013966	Nelumbium speciosum	Nelumbonacea e		Madras		10370-1	856	Sushreya Pal
583	BSIS000013967	Nelumbium speciosum	Nelumbonacea e		Madura	06.04.1904	21984	857	Sushreya Pal
584	BSIS000013968	Nelumbo nucifera	Nelumbonacea e	K.S. Srinivasan	Sudur State Forest, Mysore	26.05.1952		43940	Sushreya Pal
585	BSIS000013969	Nelumbo nucifera	Nelumbonacea e	K.S. Srinivasan	Sudur State Forest, Mysore	26.05.1952		43941	Sushreya Pal
586	BSIS000013970	Nelumbo nucifera	Nelumbonacea e	K.S. Srinivasan	Sudur State Forest, Mysore	26.05.1952		43942	Sushreya Pal
587	BSIS000013971	Nymphaea rubra	Nympheaceae	S. Mondal	Eden Gardens, Calcutta	19.04.1961		11785	Sushreya Pal
588	BSIS000013972	Nymphaea rubra	Nympheaceae	S. Mondal	Eden Gardens, Calcutta	19.04.1961		11787	Sushreya Pal
589	BSIS000013973	Nelumbium nelumbo	Nelumbonacea e		Belgaria, Mayurbhanj	28.05.1940	700	840	Sushreya Pal
590	BSIS000013974	Nymphaea lotus	Nympheaceae		Madras	16.08.1893		11778	Sushreya Pal
591	BSIS000013975	Nymphaea rubra	Nympheaceae	S.K. Mandal	Sonarpur	18.09.1977	107	49805	Sushreya Pal
592	BSIS000013976	Nymphaea rubra	Nympheaceae	S.K. Mandal	Sonarpur	18.09.1977	107	49806	Sushreya Pal
593	BSIS000013977	Nymphaea lotus	Nympheaceae	K.C. Malick	Dibong	21.11.1973	721	46690	Sushreya Pal
594	BSIS000013978	Nymphaea lotus	Nympheaceae	K.C. Malick	Dibong	21.11.1973	721	46689	Sushreya Pal
595	BSIS000013979	Nymphaea lotus	Nympheaceae	N.C. Saha	Rajgram	13.08.1988	6215	53481	Sushreya Pal

Annexure 1 (Metadata of Digitised Herbarium specimens at BSIS with Barcode)

596	BSIS000013980	Nelumbium speciosum	Nelumbonaceae	Pandit MM Nath Koul, Governor	Kashmir	30.10.1908		854	Sushreya Pal
597	BSIS000013981	Nelumbium speciosum	Nelumbonaceae	Kalka Prasad	Balarampur estate	10.10.1902	16071	853	Sushreya Pal
598	BSIS000013982	Nymphaea lotus	Nymphaeaceae	R.E.P.	Bankura	Jun-03	152	844	Sushreya Pal
599	BSIS000013983	Nelumbium speciosum	Nelumbonaceae	R.E.P.	Gorakhpur	30.08.1906		838	Sushreya Pal
600	BSIS000013984	Nelumbium speciosum	Nelumbonaceae		Aligarh	19.07.1904		850	Sushreya Pal
601	BSIS000013985	Nelumbium speciosum	Nelumbonaceae		Gorakhpur	30.08.1906		839	Sushreya Pal
602	BSIS000013986	Nelumbium speciosum	Nelumbonaceae		Bankura	20.07.1903		842	Sushreya Pal
603	BSIS000013987	Nelumbium speciosum	Nelumbonaceae		Saran, Bengal	05.05.1903		841	Sushreya Pal
604	BSIS000013988	Nelumbium speciosum	Nelumbonaceae		Bhagalpore, Bengal	27.04.1903		843	Sushreya Pal
605	BSIS000013989	Nelumbium speciosum	Nelumbonaceae		Gorakhpur	24.06.1903		852	Sushreya Pal
606	BSIS000013990	Nelumbium speciosum	Nelumbonaceae		Fyzabad, United province	05.02.1903	17633	851	Sushreya Pal
607	BSIS000013991	Nelumbium speciosum	Nelumbonaceae		Saharanpur, NW Province			846	Sushreya Pal
608	BSIS000013992	Nelumbium speciosum	Nelumbonaceae	R.E.P.	Bankura	20.02.1903		848	Sushreya Pal
609	BSIS000013993	Nymphaea lotus	Nymphaeaceae	R.E.P.	Malda, Bengal	07.04.1903		11795	Sushreya Pal
610	BSIS000013994	Nelumbium speciosum	Nelumbonaceae		Saharanpur, NW Province			845	Sushreya Pal
611	BSIS000013995	Nymphaea esculenta	Nymphaeaceae					11800	Sushreya Pal
612	BSIS000013996	Nymphaea	Nymphaeaceae		Madras	05.01.1913	35155	11799	Sushreya Pal
613	BSIS000013997	Nymphaea	Nymphaeaceae		Jainagar	20.11.1907	29328	11804	Sushreya Pal
614	BSIS000013998	Nymphaea lotus	Nymphaeaceae		Raipur, CP	11.01.1904		11788	Sushreya Pal

Annexure 1 (Metadata of Digitised Herbarium specimens at BSIS with Barcode)

615	BSIS000013999	<i>Nymphaea stellata</i>	Nympheaceae		Saharanpur, NW Province	04.11.1903		11806	Sushreya Pal
616	BSIS000014000	<i>Nymphaea stellata</i>	Nympheaceae		Saharanpur, NW Province	08.09.1903		11807	Sushreya Pal
617	BSIS000014001	<i>Nymphaea lotus</i>	Nympheaceae	Kalka Prasad	Sion	17.09.1908	30158	11790	Sushreya Pal
618	BSIS000014002	<i>Nymphaea esculenta</i>	Nympheaceae		Madras	10.09.1904		11796	Sushreya Pal
619	BSIS000014003	<i>Nymphaea esculenta</i>	Nympheaceae		Madras	24.02.1905		11797	Sushreya Pal
620	BSIS000014004	<i>Nymphaea esculenta</i>	Nympheaceae	I.H. Burkill	Gawhati bazaar, Assam	10.08.1909	32411	11794	Shrabasti Das
621	BSIS000014005	<i>Nymphaea esculenta</i>	Nympheaceae	D. Hooper	Khasia & Jayatia Hill, Assam	00.10.1910	34658	11793	Shrabasti Das
622	BSIS000014006	<i>Nymphaea stellata</i>	Nympheaceae		Madhupura, Bhagulpore, Bengal	14.09.1903		11808	Shrabasti Das
623	BSIS000014007	<i>Euryle ferox</i>	Nympheaceae	I.H. Burkill	Mymensingha	06.09.1906	27500	835	Shrabasti Das
624	BSIS000014008	<i>Euryle ferox</i>	Nympheaceae	I.H. Burkill	Decca	02.09.1904	21406	836	Shrabasti Das
625	BSIS000014009	<i>Euryle ferox</i>	Nympheaceae	K.C. Malick	Dibong , Manipur	21.11.1973	724	46701	Shrabasti Das
626	BSIS000014010	<i>Fumaria parviflora</i>	Fumariaceae	H.G. Carter	Lahore, Punjab	00.01.1918	E.B. 693	1022	Shrabasti Das
627	BSIS000014011	<i>Fumaria parviflora</i>	Fumariaceae	J.H. Lace	Chamba state	15.02.1899	1879	1018	Shrabasti Das
628	BSIS000014012	<i>Fumaria parviflora</i>	Fumariaceae	J.H. Lace	Chamba state	15.02.1899	1879	1019	Shrabasti Das
629	BSIS000014013	<i>Fumaria parviflora</i>	Fumariaceae			00.00.1897		1017	Shrabasti Das
630	BSIS000014014	<i>Dicentra thalictrifolia</i>	Fumariaceae	S.N.Das	Paglajhora, Darjeeing	11.10.1876	585	48751	Shrabasti Das
631	BSIS000014015	<i>Dicentra thalictrifolia</i>	Fumariaceae	S.K. Mandal	Fulbari, Darjeeling	26.10.1978	3395	49922	Shrabasti Das
632	BSIS000014016	<i>Dicentra scandens</i>	Fumariaceae				41005	975	Shrabasti Das
633	BSIS000014017	<i>Dicentra roylei</i>	Fumariaceae	J.H. Lace	Bixa Forest	20.09.1896	1506	971	Shrabasti Das
634	BSIS000014018	<i>Dicentra scandens</i>	Fumariaceae	K.S. Srinivasan	Bomdila, N.E.F.A. Assam	16.05.1955		42514	Shrabasti Das
635	BSIS000014019	<i>Corydalis leptocarpa</i>	Fumariaceae	K.S. Srinivasan	Bomdila, N.E.F.A. Assam	13.05.1955		42815	Shrabasti Das
636	BSIS000014020	<i>Corydalis leptocarpa</i>	Fumariaceae	K.S. Srinivasan	Bomdila, N.E.F.A. Assam	10.05.1955		42816	Shrabasti Das
637	BSIS000014021	<i>Corydalis leptocarpa</i>	Fumariaceae	K.S. Srinivasan	Bomdila, N.E.F.A. Assam	12.05.1955		42817	Shrabasti Das

Annexure 1 (Metadata of Digitised Herbarium specimens at BSIS with Barcode)

638	BSIS000014022	<i>Corydalis leptocarpa</i>	Fumariaceae	K.S. Srinivasan	Bomdila, N.E.F.A. Assam	12.05.1955		42818	Shrabasti Das
639	BSIS000014023	<i>Corydalis govaniana</i>	Fumariaceae	J.H. Lace	Bashahr, North- Western Himalaya	11.05.1890	73	993	Shrabasti Das
640	BSIS000014024	<i>Corydalis ramosa</i>	Fumariaceae	J.H. Lace	Chamba state	00.08.1899	2096	999	Shrabasti Das
641	BSIS000014025	<i>Papaver somniferum</i>	Papavaraceae	Mr. Gollan	Saharanpur, NW Province	18.05.1903	1263	1263	Shrabasti Das
642	BSIS000014026	<i>Papaver somniferum</i>	Papavaraceae		Sitapur	21.02.1995	187	891	Shrabasti Das
643	BSIS000014027	<i>Papaver somniferum</i>	Papavaraceae		Indore, Central India	26.03.1995		893	Shrabasti Das
644	BSIS000014028	<i>Papaver somniferum</i>	Papavaraceae		Indore, Central India	26.03.1896		894	Shrabasti Das
645	BSIS000014029	<i>Papaver somniferum</i>	Papavaraceae		Indore, Central India	26.03.1895	6025©	896	Sushreya Pal
646	BSIS000014030	<i>Papaver somniferum</i>	Papavaraceae		Indore, Central India	16.03.1895	6025©	897	Sushreya Pal
647	BSIS000014031	<i>Papaver somniferum</i>	Papavaraceae		Lucknow	19.02.1902	14929	890	Sushreya Pal
648	BSIS000014032	<i>Papaver somniferum</i>	Papavaraceae		Saharanpur, NW Province	01.05.1903		888	Sushreya Pal
649	BSIS000014033	<i>Papaver somniferum</i>	Papavaraceae		Saharanpur, NW Province	01.05.1903		889	Sushreya Pal
650	BSIS000014034	<i>Papaver somniferum</i>	Papavaraceae		Saharanpur, NW Province	01.05.1903		887	Sushreya Pal
651	BSIS000014035	<i>Papaver somniferum</i>	Papavaraceae	E. Thurston	Markanda road, Simla	1892		942	Sushreya Pal
652	BSIS000014036	<i>Papaver somniferum</i>	Papavaraceae	E. Thurston	Fagu road, Simla	Sept 1892		943	Sushreya Pal
653	BSIS000014037	<i>Papaver somniferum</i>	Papavaraceae	E. Thurston	Mathiana, Simla	June 1893		944	Sushreya Pal
654	BSIS000014038	<i>Papaver somniferum</i>	Papavaraceae		Sitapur, UP	21.02.1895	6043	883	Sushreya Pal
655	BSIS000014039	<i>Papaver somniferum</i>	Papavaraceae		Sitapur, UP	30.03.1895	6045	884	Sushreya Pal
656	BSIS000014040	<i>Papaver somniferum</i>	Papavaraceae		Ghazipur		37712	885	Sushreya Pal
657	BSIS000014041	<i>Papaver somniferum</i>	Papavaraceae		Ghazipur			886	Sushreya Pal
658	BSIS000014042	<i>Papaver somniferum</i>	Papavaraceae		Punjab	22.03.1906		945	Sushreya Pal
659	BSIS000014043	<i>Papaver somniferum</i>	Papavaraceae		Punjab	22.03.1906		946	Sushreya Pal
660	BSIS000014044	<i>Papaver somniferum</i>	Papavaraceae		Indore, Central India	26.03.1995			Shrabasti Das
661	BSIS000014045	<i>Papaver somniferum</i>	Papavaraceae		Indore, Central India	26.03.1995		899	Shrabasti Das
662	BSIS000014046	<i>Papaver somniferum</i>	Papavaraceae		Bhopawai, Sridorpur	14.05.1898	23	959	Shrabasti Das

Annexure 1 (Metadata of Digitised Herbarium specimens at BSIS with Barcode)

663	BSIS000014047	Papaver somniferum	Papavaraceae		Barwani state , Central India	0.00.1902		958	Shrabasti Das
664	BSIS000014048	Papaver somniferum	Papavaraceae		Gazipur			906	Shrabasti Das
665	BSIS000014049	Papaver somniferum	Papavaraceae		Gazipur			907	Shrabasti Das
666	BSIS000014050	Papaver dubium	Papavaraceae		Chamba state, North-Western Himalaya	28.05.1896	1397	858	Shrabasti Das
667	BSIS000014051	Papaver dubium	Papavaraceae		Museum Compound , Kolkata	11.12.1960		860	Shrabasti Das
668	BSIS000014052	Papaver dubium	Papavaraceae		Museum Compound , Kolkata	11.12.1960		861	Shrabasti Das
669	BSIS000014053	Meconopsis aculeata	Papavaraceae		Marhi to Rohtang Pass	30.07.1962		862	Shrabasti Das
670	BSIS000014054	Papaver somniferum	Papavaraceae		Ujeni, Central India	26.03.1895	6021	908	Shrabasti Das
671	BSIS000014055	Papaver somniferum	Papavaraceae		Indore, Central India	26.03.1895	6925	910	Shrabasti Das
672	BSIS000014056	Papaver somniferum	Papavaraceae		Ojani, Central India	26.03.1895		909	Shrabasti Das
673	BSIS000014057	Papaver somniferum	Papavaraceae		Ojani, Central India	26.03.1895		911	Shrabasti Das
674	BSIS000014058	Papaver somniferum	Papavaraceae		Ojani, Central India	26.03.1895		912	Shrabasti Das
675	BSIS000014059	Papaver somniferum	Papavaraceae		Ojani, Central India	26.03.1895		913	Shrabasti Das
676	BSIS000014060	Papaver somniferum	Papavaraceae		Bhopal, Central India	27.05.1895		918	Shrabasti Das
677	BSIS000014061	Papaver somniferum	Papavaraceae	H.R.E.P.	Bhopal, Central India	08.04.1895		917	Shrabasti Das
678	BSIS000014062	Papaver somniferum	Papavaraceae	H.R.E.P.	Bhopal, Central India	08.04.1895		916	Shrabasti Das
679	BSIS000014063	Papaver somniferum	Papavaraceae	H.R.E.P.	Bhopal, Central India	08.04.1895		915	Shrabasti Das
680	BSIS000014064	Papaver somniferum	Papavaraceae	H.R.E.P.	Bhopal, Central India	08.04.1895		914	Shrabasti Das
681	BSIS000014065	Papaver somniferum	Papavaraceae	H.R.E.P.	Bhopal, Central India	08.04.1895		921	Shrabasti Das
682	BSIS000014066	Papaver somniferum	Papavaraceae	H.R.E.P.	Bhopal, Central India	27.05.1895	6017	922	Shrabasti Das
683	BSIS000014067	Papaver somniferum	Papavaraceae	H.R.E.P.	Bhopal, Central India	27.05.1895		923	Shrabasti Das
684	BSIS000014068	Papaver somniferum	Papavaraceae	H.R.E.P.	Bhopal, Central India	27.05.1895		925	Shrabasti Das
685	BSIS000014069	Papaver somniferum	Papavaraceae	H.R.E.P.	Bhopal, Central India	27.05.1895			Shrabasti Das
686	BSIS000014070	Papaver somniferum	Papavaraceae	H.R.E.P.	Bhopal, Central India	27.05.1895		919	Shrabasti Das
687	BSIS000014071	Papaver somniferum	Papavaraceae	H.R.E.P.	Bhopal, Central India	27.05.1895		920	Shrabasti Das
688	BSIS000014072	Papaver somniferum	Papavaraceae	H.R.E.P.	Dumraon	12.03.1899		882	Shrabasti Das
689	BSIS000014073	Papaver somniferum	Papavaraceae	H.R.E.P.	Indore, Central India	26.03.1895		895	Shrabasti Das

Annexure 1 (Metadata of Digitised Herbarium specimens at BSIS with Barcode)

690	BSIS000014074	<i>Papaver somniferum</i>	Papavaraceae	H.R.E.P.	Meywar, Rajputana	26.04.1895	6159	933	Shrabasti Das
691	BSIS000014075	<i>Papaver somniferum</i>	Papavaraceae	H.R.E.P.	Meywar, Rajputana	26.04.1895	6159	931	Shrabasti Das
692	BSIS000014076	<i>Papaver somniferum</i>	Papavaraceae	H.R.E.P.	Meywar, Rajputana	26.04.1895	6159	935	Sushreya Pal
693	BSIS000014077	<i>Papaver somniferum</i>	Papavaraceae	H.R.E.P.	Meywar, Rajputana	26.04.1895	6159	936	Sushreya Pal
694	BSIS000014078	<i>Papaver somniferum</i>	Papavaraceae	H.R.E.P.	Meywar, Rajputana	26.04.1895	6159	937	Sushreya Pal
695	BSIS000014079	<i>Papaver somniferum</i>	Papavaraceae	H.R.E.P.	Meywar, Rajputana	26.04.1895	6159	938	Sushreya Pal
696	BSIS000014080	<i>Papaver somniferum</i>	Papavaraceae	H.R.E.P.	Meywar, Rajputana	26.04.1895	6159	930	Sushreya Pal
697	BSIS000014081	<i>Papaver somniferum</i>	Papavaraceae	H.R.E.P.	Meywar, Rajputana	26.04.1895	6159	931	Sushreya Pal
698	BSIS000014082	<i>Papaver somniferum</i>	Papavaraceae	H.R.E.P.	Meywar, Rajputana	26.04.1895	6159	932	Sushreya Pal
699	BSIS000014083	<i>Papaver somniferum</i>	Papavaraceae	H.R.E.P.	Meywar, Rajputana	26.04.1895	6159	929	Sushreya Pal
700	BSIS000014084	<i>Papaver somniferum</i>	Papavaraceae	H.R.E.P.	Meywar, Rajputana	26.04.1895	6159	928	Sushreya Pal
701	BSIS000014085	<i>Papaver somniferum</i>	Papavaraceae	H.R.E.P.	Meywar, Rajputana	26.04.1895	6159	927	Sushreya Pal
702	BSIS000014086	<i>Papaver somniferum</i>	Papavaraceae	H.R.E.P.	Meywar, Rajputana	26.04.1895	6159	939	Sushreya Pal
703	BSIS000014087	<i>Papaver somniferum</i>	Papavaraceae	H.R.E.P.	Meywar, Rajputana	26.04.1895	6159	940	Sushreya Pal
704	BSIS000014088	<i>Papaver somniferum</i>	Papavaraceae	H.R.E.P.	Meywar, Rajputana	26.04.1895	6159	941	Sushreya Pal
705	BSIS000014089	<i>Papaver somniferum</i>	Papavaraceae	H.R.E.P.	Indore, Central India	26.03.1895	6025	902	Sushreya Pal
706	BSIS000014090	<i>Papaver somniferum</i>	Papavaraceae	H.R.E.P.	Indore, Central India	26.03.1895	6025	903	Sushreya Pal
707	BSIS000014091	<i>Papaver somniferum</i>	Papavaraceae	H.R.E.P.	Indore, Central India	26.03.1895	6025	904	Sushreya Pal
708	BSIS000014092	<i>Papaver somniferum</i>	Papavaraceae	H.R.E.P.	Indore, Central India	26.03.1895	6025	905	Sushreya Pal
709	BSIS000014093	<i>Papaver somniferum</i>	Papavaraceae	H.R.E.P.	Jhal, Baluchistan	18.06.1903	19225	949	Sushreya Pal
710	BSIS000014094	<i>Papaver somniferum</i>	Papavaraceae	H.R.E.P.	Jhal, Baluchistan	18.06.1903	19225	947	Sushreya Pal
711	BSIS000014095	<i>Papaver somniferum</i>	Papavaraceae	H.R.E.P.	Jhal, Baluchistan	18.06.1903	19225	948	Sushreya Pal
712	BSIS000014096	<i>Corydalis rutaefolia</i>	Papavaraceae	I.H. Burkill	Simla Hills	30.04.1907	28674	985	Sushreya Pal
713	BSIS000014097	<i>Corydalis diphylla</i>	Papavaraceae	George Watt	Ravee valley			982	Sushreya Pal
714	BSIS000014098	<i>Corydalis diphylla</i>	Papavaraceae	George Watt	Nagkonda, Simla		4279	980	Sushreya Pal
715	BSIS000014099	<i>Corydalis longipes</i>	Papavaraceae	I.H. Burkill	Singlila, Sikkim	29.09.1906	27663	1005	Sushreya Pal
716	BSIS000014100	<i>Corydalis rupestris</i>	Papavaraceae	J.H. Lace	Beluchistan	15.06.1888	3768	1012	Sushreya Pal
717	BSIS000014101	<i>Corydalis cashmeriana</i>	Papavaraceae	I.H. Burkill	Singlila, Sikkim	29.09.1906	27663	1006	Sushreya Pal
718	BSIS000014102	<i>Corydalis juncea</i>	Papavaraceae	I.H. Burkill	Phallut	21.10.1904	85313	988	Sushreya Pal

Annexure 1 (Metadata of Digitised Herbarium specimens at BSIS with Barcode)

719	BSIS000014103	<i>Corydalis govaniana</i>	Papavaraceae	J.H. Lace	Chamba, Punjab		1385	992	Sushreya Pal
720	BSIS000014104	<i>Corydalis ramosa</i>	Papavaraceae	I.H. Burkill	Suket	18.05.1906	26966	1001	Sushreya Pal
721	BSIS000014105	<i>Corydalis ramosa</i>	Papavaraceae	E. Thurston	Fagu road, Simla	June 1893		1000	Sushreya Pal
722	BSIS000014106	<i>Corydalis ramosa</i>	Papavaraceae	I.H. Burkill	Simla	02.05.1907	28809	1002	Sushreya Pal
723	BSIS000014107	<i>Corydalis chaerophylla</i>	Papavaraceae	I.H. Burkill	Darjeeling	Oct-04	25128	994	Sushreya Pal
724	BSIS000014108	<i>Corydalis govaniana</i>	Papavaraceae	J.H. Lace	Baira forest, Chamba state	23.05.1896	1385	990	Sushreya Pal
725	BSIS000014109	<i>Meconopsis bella</i>	Papavaraceae	I.H. Burkill	Nepal		25357	967	Sushreya Pal
726	BSIS000014110	<i>Cathcartia villosa</i>	Papavaraceae	I.H. Burkill	Phallut	29.10.1904	25308	970	Sushreya Pal
727	BSIS000014111	<i>Roydsia suaveolens</i>	Papavaraceae	H.G. Carter	Dibrugarh	23.03.1915	41128	1598	Sushreya Pal
728	BSIS000014112	<i>Fumaria parviflora</i>	Papavaraceae		Punjab	05.03.1902	14433	1021	Sushreya Pal
729	BSIS000014113	<i>Fumaria parviflora</i>	Papavaraceae	H.R.E.P.	Amballa	13.06.1904	22898	1020	Sushreya Pal
730	BSIS000014114	<i>Fumaria parviflora</i>	Papavaraceae	I.H. Burkill	Suket	17.05.1906	26952	1015	Sushreya Pal
731	BSIS000014115	<i>Meconopsis aculeata</i>	Papavaraceae	George Watt	Ravee valley			961	Sushreya Pal
732	BSIS000014116	<i>Meconopsis aculeata</i>	Papavaraceae	R.E.P.	Kangra, Punjab	00.10.1898		960	Shrabasti Das
733	BSIS000014117	<i>Meconopsis paniculata</i>	Papavaraceae	I.H. Burkill	Singlela	20.10.1904	25267	968	Shrabasti Das
734	BSIS000014118	<i>Meconopsis paniculata</i>	Papavaraceae	R.E.P.	Singlela	20.10.1904	25267	969	Shrabasti Das
735	BSIS000014119	<i>Argeone mexicana</i>	Papavaraceae	H.R.E.P.	Saharanpur, NW Province	14.03.1904		955	Shrabasti Das
736	BSIS000014120	<i>Argeone mexicana</i>	Papavaraceae	E. Thurston	Calcutta	00.07.1893		952	Shrabasti Das
737	BSIS000014121	<i>Argeone mexicana</i>	Papavaraceae		Saharanpur, NW Province			955	Shrabasti Das
738	BSIS000014122	<i>Argeone mexicana</i>	Papavaraceae	H.R.E.P.	Burma	24.03.1908	28711	953	Shrabasti Das
739	BSIS000014123	<i>Argeone mexicana</i>	Papavaraceae	J.R.Bhattacharjee	Sorada, Ganjam, Orissa	02.02.1981	2690		Shrabasti Das
740	BSIS000014124	<i>Argeone mexicana</i>	Papavaraceae	S.K. Mandal	Duli forest, Ranchi	31.12.1987	6023	50935	Shrabasti Das
741	BSIS000014125	<i>Argeone mexicana</i>	Papavaraceae	S.K. Mandal	Duli forest, Ranchi	31.12.1987	6023	50936	Shrabasti Das
742	BSIS000014126	<i>Argeone mexicana</i>	Papavaraceae	P.J.Mehta	Rajpipla, Gujrat	16.01.1974	1695	44978	Shrabasti Das

Annexure 1 (Metadata of Digitised Herbarium specimens at BSIS with Barcode)

743	BSIS000014127	<i>Argeone mexicana</i>	Papavaraceae	J.R.Bhattacharjee	Sorada, Ganjam, Orissa	02.02.1981	2690		Shrabasti Das
744	BSIS000014128	<i>Argeone mexicana</i>	Papavaraceae	J.R.Bhattacharjee	Sorada, Ganjam, Orissa	02.02.1981	2690		Shrabasti Das
745	BSIS000014129	<i>Argeone mexicana</i>	Papavaraceae	S.N.Bal	Ballygunge, Kolkata		37716	951	Sushreya Pal
746	BSIS000014130	<i>Argeone mexicana</i>	Papavaraceae		Mayurbhanj	21.04.1939	207	950	Sushreya Pal
747	BSIS000014131	<i>Argeone mexicana</i>	Papavaraceae	K.S. Srinivasan	Indian Museum premises	29.04.1959	2317	45669	Sushreya Pal
748	BSIS000014132	<i>Argeone mexicana</i>	Papavaraceae	K.S. Srinivasan	Mysore forest	26.05.1952		43943	Sushreya Pal
749	BSIS000014133	<i>Argeone mexicana</i>	Papavaraceae	S.K. Mandal	Birhur forest	08.06.1983	4500	50374	Sushreya Pal
750	BSIS000014134	<i>Raphanus sativus</i>	Brassicaceae	I.H. Burkill	Akyab	07.01.1907	27978	1424	Sushreya Pal
751	BSIS000014135	<i>Raphanus sativus</i>	Brassicaceae	A.M. Sawyer	Amarapura, Burma	21.07.1911		1423	Sushreya Pal
752	BSIS000014136	<i>Raphanus sativus</i>	Brassicaceae	I.H. Burkill			24040	1422	Sushreya Pal
753	BSIS000014137	<i>Raphanus sativus</i>	Brassicaceae	H.R.E.P.	Burma	21.07.1917	34023 & 34024	1418	Sushreya Pal
754	BSIS000014138	<i>Crambe cordifolia</i>	Cruciferae	R. Hugh Buller	Beluchistan		19869	1417	Sushreya Pal
755	BSIS000014139	<i>Crambe cordifolia</i>	Cruciferae	R. Hugh Buller	Beluchistan	10.06.1903	17303	1416	Sushreya Pal
756	BSIS000014140	<i>Crambe cordifolia</i>	Cruciferae	R. Hugh Buller	Beluchistan		19868	1415	Sushreya Pal
757	BSIS000014141	<i>Crambe cordifolia</i>	Cruciferae	R. Hugh Buller	Beluchistan	27.08.1903	19105	1413	Sushreya Pal
758	BSIS000014142	<i>Cardamine macrophylla</i>	Brassicaceae	George Watt	N.W. Himalayas		695	1062	Sushreya Pal
759	BSIS000014143	<i>Cardamine impatiens</i>	Brassicaceae	I.H. Burkill	West of Siben	22.05.1909	32075	1058	Sushreya Pal
760	BSIS000014144	<i>Cardamine hirsuta</i>	Brassicaceae	I.H. Burkill	Simla	28.04.1907	28648	1055	Sushreya Pal
761	BSIS000014145	<i>Cardamine africana</i>	Brassicaceae	D. Hooper	Mahabaleshwar, Maharashtra	20.09.1910	34612	1052	Sushreya Pal
762	BSIS000014146	<i>Cardamine hirsuta</i>	Brassicaceae	I.H. Burkill	Bhama	02.02.1904	21548	1053	Sushreya Pal
763	BSIS000014147	<i>Cardamine impatiens</i>	Brassicaceae	H.R.E.P.	Palampur	11.03.1902	15006	1061	Sushreya Pal
764	BSIS000014148	<i>Cardamine circacoides</i>	Brassicaceae	I.H. Burkill	Pemionchi, Sikkim	24.05.1909	32145	1050	Sushreya Pal

Annexure 1 (Metadata of Digitised Herbarium specimens at BSIS with Barcode)

765	BSIS000014149	Cardamine circacoides	Brassicaceae	I.H. Burkill	Pemionchi, Sikkim	24.05.1909	32145	1051	Sushreya Pal
766	BSIS000014150	Arenaria foliosa	Caryophyllaceae	H.R.E.P.	Pangi, N.W. Himalaya	00.07.1878	2987	1978	Shrabasti Das
767	BSIS000014151	Arenaria foliosa	Caryophyllaceae	G. Watt.	Rhamni	29.05.1889	3248		Shrabasti Das
768	BSIS000014152	Arenaria holosteoides	Caryophyllaceae	G. Watt.	Chenab Valley, Punjab	00.00.1890		1986	Shrabasti Das
769	BSIS000014153	Arenaria orbiculata	Caryophyllaceae	G. Watt.	Bhagi, Sunta	15.05.1890	10122	1985	Shrabasti Das
770	BSIS000014154	Arenaria serpyllifolia	Caryophyllaceae	G. Watt.	Waterfalls below Bishap Collection's School, Simla	00.00.1889	8336	1983	Shrabasti Das
771	BSIS000014155	Arenaria densissima	Caryophyllaceae	G. Watt.	Surkia La, Sikkim	26.05.1881	5426	1982	Shrabasti Das
772	BSIS000014156	Stellaria decumbens	Caryophyllaceae	G. Watt.	Sikkim			1973A	Shrabasti Das
773	BSIS000014157	Stellaria uliginosa	Caryophyllaceae	G. Watt.		00.02.1882	6035	1973	Shrabasti Das
774	BSIS000014158	Stellaria saxatilis	Caryophyllaceae	G. Watt.	Konoma, Naga Hills, Assam	00.05.1894	11542	1972	Shrabasti Das
775	BSIS000014159	Stellaria media	Caryophyllaceae	G. Watt.	Khongui valley	00.04.1882	6317	2070	Shrabasti Das
776	BSIS000014160	Stellaria media	Caryophyllaceae	G. Watt.	Veltolah, Gawhati, Assam	27.02.1897	12229	2070A	Shrabasti Das
777	BSIS000014161	Stellaria crispata	Caryophyllaceae	G. Watt.	Simla, N. W. Himalaya	14.09.1890	9767	2062	Shrabasti Das
778	BSIS000014162	Stellaria crispata	Caryophyllaceae	G. Watt.	Simla, N. W. Himalaya	14.09.1890	9767	2063	Shrabasti Das
779	BSIS000014163	Stellaria crispata	Caryophyllaceae	G. Watt.	Simla, N. W. Himalaya		10156	2064	Shrabasti Das
780	BSIS000014164	Stellaria crispata	Caryophyllaceae	G. Watt.	Simla, N. W. Himalaya	00.10.1887		2065	Shrabasti Das

Annexure 1 (Metadata of Digitised Herbarium specimens at BSIS with Barcode)

781	BSIS000014165	<i>Lychuis pilosa</i>	Caryophyllaceae	G. Watt.	Nagkanda Hill, Bamila	00.08.1890	10147	2058	Shrabasti Das
782	BSIS000014166	<i>Polycarpon laeflingia</i>	Caryophyllaceae	G. Watt.	Nageria, Sibsagar, Assam	18.03.1895	10360	2004	Shrabasti Das
783	BSIS000014167	<i>Cerastium vulgatum</i>	Caryophyllaceae	G. Watt.	Simla, Punjab	00.00.1890	8063	2060	Shrabasti Das
784	BSIS000014168	<i>Drymaria cordata</i>	Caryophyllaceae	G. Watt.	Mudakoti, Assam	21.10.1900	14206	1995	Shrabasti Das
785	BSIS000014169	<i>Drymaria cordata</i>	Caryophyllaceae	G. Watt.	Dumar Dallang	06.04.1895	10494	1996	Shrabasti Das
786	BSIS000014170	<i>Cochlearia flava</i>	Brassicaceae	I.H. Burkill	Burhanpur	24.09.1908	31026	1073	Shrabasti Das
787	BSIS000014171	<i>Cochlearia</i> sp.	Brassicaceae	G. Watt.	Jongri	00.08.1881	5795		Shrabasti Das
788	BSIS000014172	<i>Cheiranthus cheiri</i>	Brassicaceae	R.E.P.	Kew, England	18.10.1907	1461	1024	Shrabasti Das
789	BSIS000014173	<i>Nasturtium indicum</i>	Brassicaceae	R.E.P.	Neighbourhood of Calcutta	26.10.1921		1035	Shrabasti Das
790	BSIS000014174	<i>Nasturtium officinale</i>	Brassicaceae	Kalka Prasad	Gadai, Nainital	12.06.1903	18040	1025	Shrabasti Das
791	BSIS000014175	<i>Nasturtium officinale</i>	Brassicaceae	R.E.P.	Simla	26.06.1903	19089	1026	Shrabasti Das
792	BSIS000014176	<i>Nasturtium indicum</i>	Brassicaceae	Kalka Prasad	Barkhedi, Nagpur	15.02.1909	31605	1039	Shrabasti Das
793	BSIS000014177	<i>Nasturtium montanum</i>	Brassicaceae	Kalka Prasad	Gadai, Nainital	12.06.1903	18039	1042	Shrabasti Das
794	BSIS000014178	<i>Nasturtium indicum</i>	Brassicaceae	R.E.P.	Qelgaum	13.11.1902	16910	1040	Shrabasti Das
795	BSIS000014179	<i>Nasturtium indicum</i>	Brassicaceae	R.E.P.	Qelgaum	13.11.1902	16910	1041	Shrabasti Das
796	BSIS000014180	<i>Nasturtium montanum</i>	Brassicaceae	R.E.P.	Gadai, Nainital	12.06.1903	18044	1043	Shrabasti Das
797	BSIS000014181	<i>Nasturtium indicum</i>	Brassicaceae	I.H. Burkill			23841	1029	Shrabasti Das
798	BSIS000014182	<i>Nasturtium indicum</i>	Brassicaceae	I.H. Burkill	Saikhowa	21.08.1909	32634	1028	Shrabasti Das
799	BSIS000014183	<i>Nasturtium indicum</i>	Brassicaceae	I.H. Burkill	Nyounqnyiu village	07.02.1904	21581	1030	Shrabasti Das
800	BSIS000014184	<i>Nasturtium indicum</i>	Brassicaceae	I.H. Burkill		00.00.1904	23841	1031	Shrabasti Das
801	BSIS000014185	<i>Farsetia hamiltonii</i>	Brassicaceae	R.E.P.	Jhelum, Punjab	18.02.1905	24167	1066	Shrabasti Das
802	BSIS000014186	<i>Farsetia hamiltonii</i>	Brassicaceae	R.E.P.	Qhuwani, Punjab		18122	1067	Shrabasti Das
803	BSIS000014187	<i>Farsetia hamiltonii</i>	Brassicaceae	R.E.P.	Jhelum, Punjab	18.02.1905		1068	Shrabasti Das
804	BSIS000014188	<i>Malcolmia africana</i>	Brassicaceae	Lahore		15.01.1918	E.B. 697	1075	Shrabasti Das

Annexure 1 (Metadata of Digitised Herbarium specimens at BSIS with Barcode)

805	BSIS000014189	Brassica juncea	Brassicaceae	Dr. G. King	Between Kurseong & Sureil in field	00.05.1897		1306	Shrabasti Das
806	BSIS000014190	Brassica juncea	Brassicaceae	R. Pantling	Sikkim	00.0.1897		1305	Shrabasti Das
807	BSIS000014191	Brassica juncea	Brassicaceae		Below Sureil	20.08.1914	40681	1307	Sushreya Pal
808	BSIS000014192	Brassica juncea	Brassicaceae	K.C. Malick	Sripurikhal, Manipur	01.12.1973	1083	47013	Sushreya Pal
809	BSIS000014193	Brassica juncea	Brassicaceae	K.C. Malick	Sripurikhal, Manipur	01.12.1973	1083	47014	Sushreya Pal
810	BSIS000014194	Brassica juncea	Brassicaceae	K.C. Malick	Sripurikhal, Manipur	01.12.1973	1083	47015	Sushreya Pal
811	BSIS000014195	Brassica juncea	Brassicaceae	K.C. Malick	Sripurikhal, Manipur	01.12.1973	1083	47016	Sushreya Pal
812	BSIS000014196	Brassica juncea	Brassicaceae	K.C. Malick	Sripurikhal, Manipur	01.12.1973	1083	47017	Sushreya Pal
813	BSIS000014197	Brassica juncea	Brassicaceae			1897		1289	Sushreya Pal
814	BSIS000014198	Brassica juncea	Brassicaceae			1897		1287	Sushreya Pal
815	BSIS000014199	Cardamine impatiens	Brassicaceae		Simla	May-17	EB 599	1060	Sushreya Pal
816	BSIS000014200	Cardamine impatiens	Brassicaceae		Simla	May-17	EB 599	1059	Sushreya Pal
817	BSIS000014201	Cardamine hirsuta	Brassicaceae	K.S. Srinivasan	Assam	07.05.1955		43152	Sushreya Pal
818	BSIS000014202	Cardamine hirsuta	Brassicaceae	K.S. Srinivasan	Assam	06.05.1955		43153	Sushreya Pal
819	BSIS000014203	Cardamine hirsuta	Brassicaceae	K.S. Srinivasan	Bomdila, Assam	12.05.1955		42951	Sushreya Pal
820	BSIS000014204	Cardamine hirsuta	Brassicaceae	K.S. Srinivasan	Bomdila, Assam	12.05.1955		42952	Sushreya Pal
821	BSIS000014205	Cardamine hirsuta	Brassicaceae	K.S. Srinivasan	Bomdila, Assam	18.05.1955		42946	Sushreya Pal
822	BSIS000014206	Cardamine hirsuta	Brassicaceae	K.S. Srinivasan	Bomdila, Assam	18.05.1955		42947	Sushreya Pal
823	BSIS000014207	Cardamine hirsuta	Brassicaceae	K.S. Srinivasan	Bomdila, Assam	18.05.1955		42948	Sushreya Pal
824	BSIS000014208	Cardamine hirsuta	Brassicaceae	K.S. Srinivasan	Bomdila, Assam	12.05.1955		42949	Sushreya Pal
825	BSIS000014209	Cardamine hirsuta	Brassicaceae	K.S. Srinivasan	Bomdila, Assam	12.05.1955		42950	Sushreya Pal
826	BSIS000014210	Cardamine hirsuta	Brassicaceae	K.S. Srinivasan	Bomdila, Assam	14.05.1955		42513	Sushreya Pal
827	BSIS000014211	Cardamine hirsuta	Brassicaceae	J.H. Lace	Chamba	26.03.1899	1908	1057	Sushreya Pal
828	BSIS000014212	Brassica campestris	Brassicaceae	S.K. Mandal	Sonarpur	27.09.1977	152	49741	Sushreya Pal
829	BSIS000014213	Cochlearia flava	Brassicaceae	H.G. Carter	Arrah, C.P	Mar-20	EB 1113	1071	Sushreya Pal
830	BSIS000014214	Brassica napus	Brassicaceae	D. Prain	Shibpur, Exp farm, Howrah	Dec 1896		1244	Sushreya Pal

Annexure 1 (Metadata of Digitised Herbarium specimens at BSIS with Barcode)

831	BSIS000014215	Brassica napus	Brassicaceae		Shibpur, Exp farm, Howrah	1897		1242	Sushreya Pal
832	BSIS000014216	Brassica napus	Brassicaceae		Shibpur, Exp farm, Howrah	07.01.1897		1243	Sushreya Pal
833	BSIS000014217	Brassica napus	Brassicaceae	R. Pantling	Sikkim	April 1897		1248	Sushreya Pal
834	BSIS000014218	Brassica napus	Brassicaceae	R. Pantling	Sikkim	April 1897		1249	Sushreya Pal
835	BSIS000014219	Brassica napus	Brassicaceae		Sikkim	31.05.1897		1257	Sushreya Pal
836	BSIS000014220	Brassica napus	Brassicaceae		Sikkim	31.05.1897		1255	Sushreya Pal
837	BSIS000014221	Sisymbrium irio	Brassicaceae	N.C. Nair	Punjab	13.03.1962	20014	1082	Sushreya Pal
838	BSIS000014222	Cardamine hirsuta	Brassicaceae	S.K. Mandal	Bhutia basti, Darjeeling	28.10.1978	3448	50000	Sushreya Pal
839	BSIS000014223	Cardamine hirsuta	Brassicaceae	S.K. Mandal	Bhutia basti, Darjeeling	28.10.1978	3448	50001	Sushreya Pal
840	BSIS000014224	Capsella bursa-pastoris		Dr. G. King	Konoma, Naga Hills, Assam	April 1896		1379	Sushreya Pal
841	BSIS000014225	Eruca sativa	Brassicaceae	N.C. Nair	Kapurthala, Punjab	10.03.1966	36308	1371	Sushreya Pal
842	BSIS000014226	Eruca sativa	Brassicaceae	S.N. Bal	Chumbat, Lucknow	08.06.1923	37606	1372	Sushreya Pal
843	BSIS000014227	Eruca sativa	Brassicaceae		Hansi, Punjab	10.05.1918	37203	1375	Sushreya Pal
844	BSIS000014228	Eruca sativa	Brassicaceae		Hansi, Punjab	10.05.1918	37203	1376	Sushreya Pal
845	BSIS000014229	Eruca sativa	Brassicaceae	S.N. Bal	Chumbat, Lucknow	08.01.1923	37606	1373	Sushreya Pal
846	BSIS000014230	Brassica napus	Brassicaceae	K.S. Srinivasan	Bomdila, Assam	13.05.1955		42512	Sushreya Pal
847	BSIS000014231	Brassica napus	Brassicaceae	K.S. Srinivasan	Bomdila, Assam	13.05.1955		42813	Sushreya Pal
848	BSIS000014232	Brassica oleracea	Brassicaceae	D. Hooper	Calcutta market	Apr-13		1153	Sushreya Pal
849	BSIS000014233	Brassica nigra	Brassicaceae		Grown in Museum from seeds received from Rochester, New York, USA			1101	Sushreya Pal
850	BSIS000014234	Brassica juncea	Brassicaceae		Shibpur, Exp farm, Howrah	07.01.1897		1291	Sushreya Pal
851	BSIS000014235	Brassica juncea	Brassicaceae		Shibpur, Exp farm, Howrah	07.01.1897		1290	Sushreya Pal

Annexure 1 (Metadata of Digitised Herbarium specimens at BSIS with Barcode)

852	BSIS000014236	<i>Lepidium sativum</i>	Brassicaceae	B.S.I.	Bombay collector of customs	19.12.1918	37285	1396	Shrabasti Das
853	BSIS000014237	<i>Lepidium sativum</i>	Brassicaceae	H. G. Carter	Dibrugarh		83	1397	Shrabasti Das
854	BSIS000014238	<i>Lepidium sativum</i>	Brassicaceae	H. G. Carter	Calcutta Alexandra court	00.00.1920		1399	Shrabasti Das
855	BSIS000014239	<i>Ibris</i> sp.	Cruciferae	A. Basu	Ballygunge, Kolkata	00.11.1937			Shrabasti Das
856	BSIS000014240	<i>Matthiola incana</i>	Cruciferae	R.E.P.	Kew, England, Royal Garden	23.10.1907		1023	Shrabasti Das
857	BSIS000014241	<i>Brachystemma calycinum</i>	Cruciferae	George Watt	Ching Sow, Naga Hill	00.01.1882	5183	1974	Shrabasti Das
858	BSIS000014242	<i>Brachystemma calycinum</i>	Cruciferae	George Watt	Manipur	00.01.1882		1975	Shrabasti Das
859	BSIS000014243	<i>Spevgula arvensis</i>	Cruciferae	R.E.P.			14899	1993	Shrabasti Das
860	BSIS000014244	<i>Polycarpea corymbosa</i>	Cruciferae	George Watt	Mahabalipuram, Madras	14.12.1898	12930	2014	Shrabasti Das
861	BSIS000014245	<i>Polycarpea corymbosa</i>	Cruciferae	George Watt	Pathankote, Punjab	00.05.1878		2010	Shrabasti Das
862	BSIS000014246	<i>Silene conoidea</i>	Cruciferae	R.E.P.	Dhani State	00.03.1889	9707	2038	Shrabasti Das
863	BSIS000014247	<i>Silene inflata</i>	Cruciferae	George Watt	Russhotto, Kumaon	00.05.1889	4884	2035	Shrabasti Das
864	BSIS000014248	<i>Saponaria vaccaria</i>	Cruciferae	George Watt	Dhani State, N.W. Himalaya	00.03.1889	9715	2028	Shrabasti Das
865	BSIS000014249	<i>Saponaria vaccaria</i>	Cruciferae	George Watt	Allahabad	11.02.1902	14825	2030	Shrabasti Das
866	BSIS000014250	<i>Gypophila cerastioides</i>	Cruciferae	George Watt	Nuttyan to Nagkanda	00.06.1891		2021	Shrabasti Das
867	BSIS000014251	<i>Cucubalus bacciferus</i>	Cruciferae	R.E.P.	Chamba, Punjab		2055	2049	Shrabasti Das
868	BSIS000014252	<i>Lunaria biennis</i>	Cruciferae		England			1063	Shrabasti Das
869	BSIS000014253	<i>Capoella bursa-pastoris</i>	Cruciferae	I.H. Burkill	Theog, Punjab	27.04.1907	28640	1381	Shrabasti Das
870	BSIS000014254	<i>Capoella bursa-pastoris</i>	Cruciferae	I.H. Burkill	Theog, Punjab	27.04.1907	28639	1380	Shrabasti Das
871	BSIS000014255	<i>Eruca sativa</i>	Cruciferae	Kalka Prasad	Jessore	14.01.1909	30653	1374	Shrabasti Das
872	BSIS000014256	<i>Brassica oleracea</i>	Cruciferae	J. Mackenna, I.H. Burkill		07.12.1908	31456	1152	Shrabasti Das

Annexure 1 (Metadata of Digitised Herbarium specimens at BSIS with Barcode)

873	BSIS000014257	Brassica oleracea	Cruciferae	R. E. P.	Saharanpur, United Province	01.05.1903		1155	Shrabasti Das
874	BSIS000014258	Brassica oleracea	Cruciferae	R. E. P.	Saharanpur, United Province	01.05.1903		1156	Shrabasti Das
875	BSIS000014259	Brassica oleracea	Cruciferae	R. E. P.	Saharanpur, United Province	01.05.1903		1157	Shrabasti Das
876	BSIS000014260	Brassica oleracea	Cruciferae	R. E. P.	Saharanpur, United Province	01.05.1903		1158	Shrabasti Das
877	BSIS000014261	Brassica oleracea	Cruciferae	R. E. P.	Saharanpur, United Province	01.05.1903		1159	Shrabasti Das
878	BSIS000014262	Brassica oleracea	Cruciferae	R. E. P.	Saharanpur, United Province	01.05.1903		1160	Shrabasti Das
879	BSIS000014263	Brassica oleracea	Cruciferae	R.E.P.	Saharanpur, United Province	01.05.1903		1129	Shrabasti Das
880	BSIS000014264	Brassica oleracea	Cruciferae	R.E.P.	Saharanpur, United Province	01.05.1903		1130	Shrabasti Das
881	BSIS000014265	Brassica oleracea	Cruciferae	R.E.P.	Saharanpur, United Province	01.05.1903		1131	Shrabasti Das
882	BSIS000014266	Brassica oleracea	Cruciferae	R.E.P.	Saharanpur, United Province	01.05.1903		1132	Shrabasti Das
883	BSIS000014267	Brassica oleracea	Cruciferae	R.E.P.	Saharanpur, United Province	01.05.1903		1133	Shrabasti Das
884	BSIS000014268	Brassica oleracea	Cruciferae	R.E.P.	Saharanpur, United Province	01.05.1903		1134	Shrabasti Das
885	BSIS000014269	Brassica oleracea	Cruciferae	R.E.P.	Saharanpur, United Province	01.05.1903		1142	Shrabasti Das
886	BSIS000014270	Brassica oleracea	Cruciferae	R.E.P.	Saharanpur, United Province	01.05.1903		1143	Shrabasti Das
887	BSIS000014271	Brassica oleracea	Cruciferae	R.E.P.	Saharanpur, United Province	01.05.1903		1145	Shrabasti Das
888	BSIS000014272	Brassica oleracea	Cruciferae	R.E.P.	Saharanpur, United Province	01.05.1903		1147	Shrabasti Das
889	BSIS000014273	Brassica oleracea	Cruciferae	R.E.P.	Saharanpur, United Province	01.05.1903		1148	Shrabasti Das

Annexure 1 (Metadata of Digitised Herbarium specimens at BSIS with Barcode)

890	BSIS000014274	Brassica oleracea	Cruciferae	R.E.P.	Saharanpur, United Province	01.05.1903		1150	Shrabasti Das
891	BSIS000014275	Brassica oleracea	Cruciferae	R.E.P.	Saharanpur, United Province	01.05.1903		1151	Shrabasti Das
892	BSIS000014276	Brassica napus	Cruciferae	R.E.P.	Jorhat, Assam	19.11.1903		1241	Shrabasti Das
893	BSIS000014277	Brassica napus	Cruciferae	R.E.P.	Sychet, Assam	00.02.1900		1235	Shrabasti Das
894	BSIS000014278	Brassica napus	Cruciferae	R.E.P.	Sychet, Assam	00.02.1900		1236	Shrabasti Das
895	BSIS000014279	Brassica napus	Cruciferae	R.E.P.	Sychet, Assam	00.02.1900		1237	Shrabasti Das
896	BSIS000014280	Brassica napus	Cruciferae	R.E.P.	Sychet, Assam	00.02.1900		1238	Shrabasti Das
897	BSIS000014281	Brassica oleracea	Cruciferae	R.E.P.	Sychet, Assam	01.05.1903		1141	Shrabasti Das
898	BSIS000014282	Brassica oleracea	Cruciferae	R.E.P.	Saharanpur, United Province	01.05.1903		1144	Shrabasti Das
899	BSIS000014283	Brassica oleracea	Cruciferae	R.E.P.	Saharanpur, United Province	18.05.1903		1140	Sourav Dey Das
900	BSIS000014284	Brassica oleracea	Cruciferae	R.E.P.	Saharanpur, United Province	18.05.1903		1139	Sourav Dey Das
901	BSIS000014285	Brassica juncea	Brassicaceae	I.H. Burkill	Lakhimpur, Assam	18.08.1909	32620	1283	Sourav Dey Das
902	BSIS000014286	Brassica juncea	Brassicaceae	H.G. Carter	Lakhimpur, Assam	07.03.1915		1282	Sourav Dey Das
903	BSIS000014287	Brassica juncea	Brassicaceae	I.H. Burkill	Akyab, Burma	07.01.1907	27981	1272	Sourav Dey Das
904	BSIS000014288	Brassica juncea	Brassicaceae	R.E.P.	Shillong, Assam	20.02.1900		1278	Sourav Dey Das
905	BSIS000014289	Brassica juncea	Brassicaceae	R.E.P.	Shillong, Assam	20.02.1900		1276	Sourav Dey Das
906	BSIS000014290	Brassica juncea	Brassicaceae	R.E.P.	Shillong, Assam	10.03.1900		1277	Sourav Dey Das
907	BSIS000014291	Nastartium indicum	Brassicaceae	Kalka Prasad	Howrah	00.07.1921		1038	Shrabasti Das
908	BSIS000014292	Nastartium indicum	Brassicaceae	K.S. Srinivasan	Indian Museum premises		2341	45670	Shrabasti Das
909	BSIS000014293	Nastartium indicum	Brassicaceae	H.G. Carter	Tollygange, Kolkata	00.03.1918		1037	Shrabasti Das
910	BSIS000014294	Nastartium indicum	Brassicaceae	H.G. Carter	Tollygange, Kolkata	00.05.1978		1036	Shrabasti Das

Annexure 1 (Metadata of Digitised Herbarium specimens at BSIS with Barcode)

911	BSIS000014295	Nastartium indicum	Brassicaceae			00.00.1897		1034	Shrabasti Das
912	BSIS000014296	Nastartium indicum	Brassicaceae	K.S. Srinivasan			2334	45671	Shrabasti Das
913	BSIS000014297	Nastartium palustse	Brassicaceae	S.K. Mukerjee	Nepal	28.10.1950		44078	Shrabasti Das
914	BSIS000014298	Senebiera didyma	Brassicaceae	Mr. Gollan	Saharanpur, United Province	01.05.1903		1387	Sourav Dey Das
915	BSIS000014299	Senebiera didyma	Brassicaceae	I.H. Burkill	Mysore	29.11.1902	17752	1392	Sourav Dey Das
916	BSIS000014300	Senebiera didyma	Brassicaceae	R.E.P.	Lahore	27.04.1907	28590	1390	Sourav Dey Das
917	BSIS000014301	Senebiera pinnatifida	Brassicaceae	Mr. Gollan	Saharanpur	14.05.1904		1386	Sourav Dey Das
918	BSIS000014302	Lepidium sativum	Brassicaceae	Mr. Gollan	Saharanpur, United Province	01.05.1903		1393	Sourav Dey Das
919	BSIS000014303	Lepidium sativum	Brassicaceae	Mr. Gollan	Saharanpur, United Province	01.05.1903		1395	Sourav Dey Das
920	BSIS000014304	Lepidium sativum	Brassicaceae	I.H. Burkill & Kalka Pershad	Kathmandu, Nepal	07.12.1907	29841	1400	Sourav Dey Das
921	BSIS000014305	Lepidium sativum	Brassicaceae		Ajmer, Rajasthan	04.04.1912		1403	Sourav Dey Das
922	BSIS000014306	Lepidium sativum	Brassicaceae		Mewar, Rajasthan	19.01.1912		1404	Sourav Dey Das
923	BSIS000014307	Lepidium sativum	Brassicaceae	R.E.P.	Burma	24.02.1904	23833	1405	Sourav Dey Das
924	BSIS000014308	Erysimum hievaciifolium	Brassicaceae	R.E.P.	Chouki Suket	30.06.1903	20041	1094	Shrabasti Das
925	BSIS000014309	Sisymbrium irio	Brassicaceae	I.H. Burkill	Hissor, Punjab	12.06.1903	18118	1086	Shrabasti Das
926	BSIS000014310	Sisymbrium irio	Brassicaceae	R.E.P.	Multan, Punjab	23.11.1905		1087	Shrabasti Das
927	BSIS000014311	Sisymbrium irio	Brassicaceae						Shrabasti Das
928	BSIS000014312	Sisymbrium irio	Brassicaceae	I.H. Burkill	Lahore	27.04.1907	28592	1085	Shrabasti Das
929	BSIS000014313	Sisymbrium irio	Brassicaceae	I.H. Burkill	Lahore	27.04.1907	28592	1084	Shrabasti Das
930	BSIS000014314	Sisymbrium thalianum	Brassicaceae	R.E.P.	Miruli, Saharanpur	00.00.1904		1078	Shrabasti Das
931	BSIS000014315	Raphanus sativus	Brassicaceae	Kalka Prasad	Agra bazar	01.12.1909	33945	1441	Sushreya Pal

Annexure 1 (Metadata of Digitised Herbarium specimens at BSIS with Barcode)

932	BSIS000014316	Raphanus sativus	Brassicaceae	R.K. das	Delhi bazar	27.11.1909	33929	1439	Sushreya Pal
933	BSIS000014317	Raphanus sativus	Brassicaceae	R.K. das	Patiala bazar	08.12.1909	33972	1438	Sushreya Pal
934	BSIS000014318	Raphanus sativus	Brassicaceae	I. H. Burkill	Coorla, Bombay	06.11.1902	16695	1436	Sushreya Pal
935	BSIS000014319	Raphanus sativus	Brassicaceae	I. H. Burkill	Coorla, Bombay	06.11.1902	16695	1437	Sushreya Pal
936	BSIS000014320	Raphanus sativus	Brassicaceae	R.K. das	Lahore bazar	15.12.1909	33975	1435	Sushreya Pal
937	BSIS000014321	Raphanus sativus	Brassicaceae	R.E.P.	Quetta, Baluchistan	12.06.1911		1431	Sushreya Pal
938	BSIS000014322	Raphanus sativus	Brassicaceae	I.H. Burkill	Kathmandu, Nepal	07.12.1907	29843	1433	Sushreya Pal
939	BSIS000014323	Raphanus sativus	Brassicaceae	M.R. Mookerji	Calcutta market	06.09.1911	33461	1431	Sushreya Pal
940	BSIS000014324	Raphanus sativus	Brassicaceae	J.C. Higgins	Jorhat, Assam	09.07.1908		1430	Sushreya Pal
941	BSIS000014325	Raphanus sativus	Brassicaceae	H.G. Carter	Dibrugarh	09.03.XXXX	33	1427	Sushreya Pal
942	BSIS000014326	Raphanus sativus	Brassicaceae	M.R. Mookerji	Calcutta market	6.09.1911	33461	1425	Sushreya Pal
943	BSIS000014327	Brassica rugosa	Brassicaceae	David Prain	Shibpur, Exp farm, Howrah	11.02.1897		1341	Sushreya Pal
944	BSIS000014328	Brassica rugosa	Brassicaceae	R. Pantling	Sikkim	April 1897		1342	Sushreya Pal
945	BSIS000014329	Brassica rugosa	Brassicaceae	I.H. Burkill	Phakhait, Burma	Jan-04	24038	1346	Sushreya Pal
946	BSIS000014330	Brassica juncea	Brassicaceae	I.H. Burkill	Phakhait, Burma	Jan-04	24038	1347	Sushreya Pal
947	BSIS000014331	Brassica juncea	Brassicaceae	R.E.P.	Phakhait, Burma	16.01.1904	24039	1348	Sushreya Pal
948	BSIS000014332	Brassica rugosa	Brassicaceae	I.H. Burkill & S.C. Banerjee	Khasia hills, Assam	31.05.1911	126	1349	Sushreya Pal
949	BSIS000014333	Brassica rugosa	Brassicaceae	R.E.P.	Assam valley	10.03.1900		1351	Sushreya Pal
950	BSIS000014334	Brassica rugosa	Brassicaceae	George Watt	Jalpaiguri dist	March 1897		1354	Sushreya Pal
951	BSIS000014335	Brassica rugosa	Brassicaceae		Darjeeling	29.03.1900		1355	Sushreya Pal
952	BSIS000014336	Euclidium tenuissimum	Brassicaceae	J.H. Lace	Bashahr, North- Western Himalaya	07.05.1891	883	1411	Sushreya Pal
953	BSIS000014337	Diplotaxis griffitthi	Brassicaceae		Jhelum, Punjab	23.06.1902		1369	Sushreya Pal
954	BSIS000014338	Diplotaxis griffitthi	Brassicaceae		Jhelum, Punjab	28.06.1902		1368	Sushreya Pal
955	BSIS000014339	Diplotaxis griffitthi	Brassicaceae		Jhelum, Punjab	23.06.1902		1367	Sushreya Pal
956	BSIS000014340	Diplotaxis griffitthi	Brassicaceae		Jhelum, Punjab	23.06.1902		1366	Sushreya Pal
957	BSIS000014341	Diplotaxis griffitthi	Brassicaceae		Jhelum, Punjab	23.06.1902		1365	Sushreya Pal
958	BSIS000014342	Diplotaxis griffitthi	Brassicaceae		Jhelum, Punjab	23.06.1902		1364	Sushreya Pal
959	BSIS000014343	Diplotaxis sp.	Brassicaceae					1370	Sushreya Pal

Annexure 1 (Metadata of Digitised Herbarium specimens at BSIS with Barcode)

960	BSIS000014344	Brassica juncea	Brassicaceae	R. E. P.	Berar, C. P.	22.08.1905		1280	Sushreya Pal
961	BSIS000014345	Brassica rugosa	Brassicaceae	R. E. P.	Darjeeling	29.03.1900	422	1344	Sushreya Pal
962	BSIS000014346	Brassica rugosa	Brassicaceae	R. E. P.	Darjeeling	29.03.1900		1343	Sushreya Pal
963	BSIS000014347	Brassica rugosa	Brassicaceae		Sibsagar, Assam	03.03.1909		1340	Sushreya Pal
964	BSIS000014348	Brassica rugosa	Brassicaceae		Kamrup, Gauhati	11.02.1909		1339	Sushreya Pal
965	BSIS000014349	Brassica rugosa	Brassicaceae		Sibsagar, Assam	03.03.1909		1338	Sushreya Pal
966	BSIS000014350	Brassica rugosa	Brassicaceae		Jorhat, Assam	19.11.1903		1337	Sushreya Pal
967	BSIS000014351	Brassica rugosa	Brassicaceae		Shillong, Assam	11.01.1900		1336	Sushreya Pal
968	BSIS000014352	Brassica rugosa	Brassicaceae		Sibsagar, Assam	03.03.1909		1332	Sushreya Pal
969	BSIS000014353	Brassica rugosa	Brassicaceae		Sibsagar, Assam	03.03.1909		1331	Sushreya Pal
970	BSIS000014354	Brassica rugosa	Brassicaceae		Shillong, Assam	11.01.1900		1333	Sushreya Pal
971	BSIS000014355	Brassica juncea	Brassicaceae	Director	Cauripore, U. Provinces	15.04.1905	24338	1320	Sushreya Pal
972	BSIS000014356	Brassica juncea	Brassicaceae	Director	Cauripore, U. Provinces	15.04.1905	24338	1319	Sushreya Pal
973	BSIS000014357	Brassica juncea	Brassicaceae		Dudhi Mirzapore	03.02.1903	18271	1312	Sushreya Pal
974	BSIS000014358	Brassica juncea	Brassicaceae	D. Hooper	Lohba, Garhwal	19.10.1912	39020	1317	Sushreya Pal
975	BSIS000014359	Brassica juncea	Brassicaceae	D. Hooper	Lohba, Garhwal	19.10.1912	39020	1311	Sushreya Pal
976	BSIS000014360	Brassica juncea	Brassicaceae	I.H. Burkill	Chikal baher village, Chittagong	21.01.1907	28061	1310	Sushreya Pal
977	BSIS000014361	Brassica rugosa	Brassicaceae	Kalka Prasad	Rangoon bazar, Burma	01.12.1908	31412	1330	Sushreya Pal
978	BSIS000014362	Brassica campestris	Brassicaceae	R.E.P.	Bhirhana near Panipat	23.01.1903	18189	1234	Sourav Dey Das
979	BSIS000014363	Brassica campestris	Brassicaceae	D. Prain	Jalpaiguri dist	07.01.1897		1229	Sourav Dey Das
980	BSIS000014364	Brassica campestris	Brassicaceae	I.H. Burkill	Akyab, Burma	15.01.1907	28034	1225	Sourav Dey Das
981	BSIS000014365	Brassica campestris	Brassicaceae	I.H. Burkill	Akyab, Burma	14.01.1907	28015	1226	Sourav Dey Das
982	BSIS000014366	Brassica oleracea	Brassicaceae	Mr. Gollan	Saharanpur, United Province	01.05.1903		1121	Sourav Dey Das

Annexure 1 (Metadata of Digitised Herbarium specimens at BSIS with Barcode)

983	BSIS000014367	Brassica oleracea	Brassicaceae	Mr. Gollan	Saharanpur, United Province	01.05.1903		1113	Sourav Dey Das
984	BSIS000014368	Brassica oleracea	Brassicaceae	Mr. Gollan	Saharanpur, United Province	01.05.1903		1114	Sourav Dey Das
985	BSIS000014369	Brassica oleracea	Brassicaceae	Mr. Gollan	Saharanpur, United Province	01.05.1903		1115	Sourav Dey Das
986	BSIS000014370	Brassica oleracea	Brassicaceae	Mr. Gollan	Saharanpur, United Province	01.05.1903		1116	Sourav Dey Das
987	BSIS000014371	Brassica oleracea	Brassicaceae	Mr. Gollan	Saharanpur, United Province	01.05.1903		1117	Sourav Dey Das
988	BSIS000014372	Brassica oleracea	Brassicaceae	Mr. Gollan	Saharanpur, United Province	01.05.1903		1118	Sourav Dey Das
989	BSIS000014373	Brassica oleracea	Brassicaceae	Mr. Gollan	Saharanpur, United Province	01.05.1903		1119	Sourav Dey Das
990	BSIS000014374	Brassica oleracea	Brassicaceae	Mr. Gollan	Saharanpur, United Province	01.05.1903		1123	Sourav Dey Das
991	BSIS000014375	Brassica oleracea	Brassicaceae	Mr. Gollan	Saharanpur, United Province	01.05.1903		1125	Sourav Dey Das
992	BSIS000014376	Brassica oleracea	Brassicaceae	Mr. Gollan	Saharanpur, United Province	01.05.1903		1126	Sourav Dey Das
993	BSIS000014377	Brassica oleracea	Brassicaceae	Mr. Gollan	Saharanpur, United Province	01.05.1903		1127	Sourav Dey Das
994	BSIS000014378	Brassica oleracea	Brassicaceae	Mr. Gollan	Saharanpur, United Province	01.05.1903		1128	Sourav Dey Das
995	BSIS000014379	Brassica campestris	Brassicaceae	I.H. Burkill & Kalka Pershad	Kathmandu, Nepal	07.12.1907	29842	1259	Sourav Dey Das
996	BSIS000014380	Brassica campestris	Brassicaceae	I.H. Burkill	Hsipaw Bazaar, Myanmar	18.01.1904	22624	1258	Sourav Dey Das
997	BSIS000014381	Brassica rapa	Brassicaceae	Mr. Gollan	Saharanpur, United Province	19.03.1903		1261	Sourav Dey Das
998	BSIS000014382	Brassica rapa	Brassicaceae	Mr. Gollan	Saharanpur, United Province	19.03.1903		1262	Sourav Dey Das
999	BSIS000014383	Brassica rapa	Brassicaceae	Mr. Gollan	Saharanpur, United Province	19.03.1903		1263	Sourav Dey Das

Annexure 1 (Metadata of Digitised Herbarium specimens at BSIS with Barcode)

100 0	BSIS000014384	Brassica rapa	Brassicaceae	Mr. Gollan	Saharanpur, United Province	19.03.1903		1264	Sourav Dey Das
----------	---------------	---------------	--------------	------------	--------------------------------	------------	--	------	-------------------

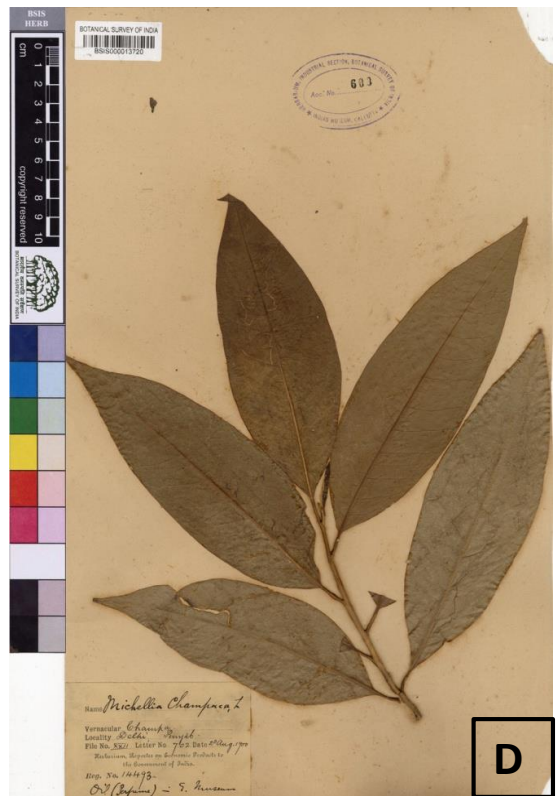


Photo Plate 1: A - *Ranunculus laetus* Wall; B - *Ranunculus hirtellus* Royle; C - *Dillenia pentagyna* Roxb. ; D - *Michelia champaca* L.



Photo Plate 2 : E - *Thalictum foliolosum* Dc. ; F - *Aconitum lacinitum* (Bruhl) Stapf; G - *Illicium manipurenses* Watt; H- *Annona squamosa* L.

